

LYNX[®]



2021 SNOWMOBILES



**TOGETHER, WE RIDE HARDER AND PUSH OURSELVES FURTHER.
WE EXPLORE THE WILDERNESS TO FIND OUR FREEDOM.
FROM THE FIRST SNOWFALL TO THE LAST SPRING SLUSH.
WE ARE FIRST ON AND LAST OFF THE SNOW.
THIS IS OUR SEASON.
THIS IS OUR WAY OF LIFE.
THIS IS OUR TRIBE.**

- 04 The New Xterrain Brutal
- 06 Platform & Suspension Technology
- 07 Rotax Engines
- 08 Xterrain
- 10 69 Ranger
- 12 59 Ranger
- 14 Commander
- 16 BoonDocker
- 18 Xtrim
- 20 49 Ranger
- 22 Rave
- 24 Andreas Bergmark interview
- 26 Technical Specifications

NORDIC SNOW JUNKIES

TEXT BRP, Olli Autonen DESIGN AND LAYOUT Avidly
PHOTOS BRP, Felix Körner, Harri Tarvainen, Timo Veijalainen, Olli Autonen

© 2020 BRP Finland Oy. All rights reserved. *, ™ and the BRP logo are trademarks of Bombardier Recreational Products Inc. or its affiliates. †All other trademarks are the property of their respective owners. Printed in Finland. Because of our ongoing commitment to product quality and innovation, we reserve the right at any time to discontinue or change specifications, prices, designs, features, models or equipment without incurring obligation. Always consult your snowmobile dealer when selecting a snowmobile for your particular needs and carefully read and pay special attention to your Operator's Guide, safety instructions and to the safety labeling on your snowmobile. Always ride responsibly and safely. Always wear appropriate clothing, including a helmet. Always observe applicable local laws and regulations. Don't drink and drive. Units in pictures can be equipped with optional accessories.

UNSTOPPABLE

XTERRAIN BRUTAL IS UNVARNISHED AND UNSTOPPABLE.

IT IS THE MOST RUGGED LYNX OF ALL TIMES. AN ADVENTURE SNOWMOBILE THAT CRUSHES THE CONCEPTION OF IMPOSSIBLE.

THE XTERRAIN BRUTAL OFFERS RAW POWER, UNMATCHED CAPABILITY AND EASY HANDLING COMBINED WITH SPORTY RIDING CHARACTERISTICS.

CHOOSE YOUR DIRECTION AND LET THE ADVENTURE BEGIN!

RADIEN-X DESIGN

Rugged construction and optimized weight distribution make the Radien-X chassis ideal for the Xterrain Brutal adventure snowmobile. Easy handling, comfortable riding ergonomics and wind protection designed for Arctic conditions, all contribute to the success of your adventure.

POWERFUL ROTAX 850 E-TEC ENGINE

The 165-horsepower Rotax 850 E-TEC engine offers explosive throttle response and seemingly endless power, giving the Xterrain Brutal the character it deserves.

EASYRIDE REAR SUSPENSION WITH 3923 x 500 x 60 MM TRACK

To leverage the power of the engine, Brutal is equipped with the EasyRide rear suspension and a 3923 mm long and 500 mm wide track with 60 mm profile, providing maximum traction in extremely demanding snow conditions. Thanks to the wide track, Xterrain Brutal is stable, yet amazingly nimble.



KYB SHOCK ABSORBERS FOR SPEEDY STAGES

The suspension on Xterrain Brutal is tuned for endure-style fast-paced riding. The rear suspension KYB 46 shock absorbers ensure high load-bearing capacity and performance.

EFFICIENT COOLING SYSTEM

Tunnel cooling together with an air radiator with fan keep the engine at optimum temperatures when riding slowly and in varying snow conditions.

SEAT DESIGNED FOR ACTIVE DRIVING

The Brutal seat has a narrow design, allowing active movement during sporty riding. Abundant cushioning in the back provides comfort for long journeys.

BLADE DS+ SKI FOR VARIABLE SNOW CONDITIONS

The Blade DS+ ski provides the Lynx Xterrain Brutal adventure snowmobile with precise steering in variable snow conditions. The long ski makes the steering precise and stable on trail and improves maneuverability in deep snow.

EQUIP FOR ADVENTURE

The Multi-LinQ cargo plate provides transport capacity and customizing options to match the requirements of your adventure. The cargo plate allows fast and easy attachment of LinQ accessories of different sizes.



RADIEN AND RADIEN-X

A CONFIDENT AND CONTROLLED RIDING EXPERIENCE IS BASED ON THE RADIEN AND RADIEN-X DESIGNS THAT ARE CREATED FOR THE RIDER AND NOW COVER THE ENTIRE LYNX COLLECTION.

RADIEN

The Radien chassis is designed for active riding. Optimal weight distribution, combined with a bevelled tunnel, narrow seat and fuel tank, allows free rider movement and effortless handling. The integrated tunnel radiator is a light and efficient cooling solution.

RADIEN DS

The revolutionary Radien DS chassis provides maximum control in deep snow and on steep slopes. The secret of agility is a short tunnel that reduces drag on slopes and in deep snow. The integrated tunnel radiator, combined with an innovative rear axle snowguard, provides a light and efficient cooling solution.

RADIEN-X

We designed the Radien-X chassis for versatility. It has an optimum weight distribution, excellent ergonomics, rugged construction and adaptable cargo space.

Snowmobiles with the Radien-X chassis combine maneuverability, wind protection, practicality and comfort. The result is an uncompromised riding experience.



RAVE
RADIEN, PPS²



BOONDOCKER RE
RADIEN DS, PPS²



BOONDOCKER DS
RADIEN DS, PPS² DS+



XTRIM
RADIEN-X, PPS²



XTERRAIN BRUTAL
RADIEN-X, EASYRIDE-F



59 RANGER 600 ACE
RADIEN-X, EASYRIDE-A

SUSPENSION

PPS²

The perfect rear suspension for sporty riding and comfort for long distances. The independent operation of the front and rear arms of the PPS² rear suspension allows continuous use of the entire large suspension travel.

PPS² DS+

The rear suspension designed for deepest snow and steepest slopes. The PPS² DS+ rear suspension's simple and lightweight structure low angle of attack provide great deep snow performance and handling.

EASYRIDE-F

Strong performance and unparalleled riding comfort. The simple and open design of EasyRide-F rear suspension prevents snow buildup, retaining performance even in demanding conditions. Track's low angle of attack adds to the deep snow performance.

EASYRIDE-A

EasyRide-A rear suspension provides high level performance and superior ride comfort. The unique rear extension mechanism makes reversing in soft snow effortless and maximizes traction when hauling. The version with quick adjustment is easy and quick to optimize for single or dual rides as well as for carrying cargo.

ROTAX-ENGINES

THE NEW 600 EFI

The new 600 cm³-class engine, which meets latest emission standards. Equipped with fuel injection, the Rotax 600 EFI engine produces 85 horsepower, great torque and unprecedented fuel economy in its class. Reliable and easy to use, the engine is based on the Rotax 600R E-TEC engine.

- 85 horsepower
- modern and efficient
- meets latest NRMM emission standards
- torqueful
- easy to use
- based on the Rotax 600R E-TEC



ROTAX E-TEC® ENGINES

2-STROKE

E-TEC direct-injection engine technology delivers the most sought-after attributes in the snowmobile industry – adrenaline-surging power, light weight, and recognized reliability. You also get the best ownership experience with:

- Industry-leading fuel economy¹
- Excellent oil economy
- Virtually no smoke or smell
- Light, linear throttle pull
- Automatic summerization process

850 E-TEC

- 165 horsepower¹

600R E-TEC

- 125 horsepower¹

600 EFI

- 85 horsepower¹
- modern and efficient

E-TEC engines are the best-selling 2-stroke engines in snowmobiling³

ROTAX ACE™ ENGINES

4-STROKE

With the Advanced Combustion Efficiency (ACE) family of engines, BRP engineers optimized the combustion system, reduced mechanical friction, and freed intake and exhaust breathing. The result is the most efficient engines in snowmobiling. Not only are they efficient, they're a pleasure to operate and own. Very little maintenance is required; they run smoothly and produce a nice, solid – yet quiet – sound.

900 ACE TURBO WITH ITC

- Rotax-designed turbocharger
- 150 horsepower²
- Up to 12.1 L/100 km⁴

900 ACE WITH ITC

- 3 cylinders
- 95 horsepower²
- Up to 10.8 L/100 km⁴

600 ACE WITH ITC

- 2 cylinders
- 62 horsepower²
- Up to 8 L/100 km – the most fuel-efficient in the entire industry⁴

ACE engines are the best-selling 4-stroke engines in snowmobiling.³

INTELLIGENT THROTTLE CONTROL (ITC)

Standard on the ACE engines, the iTC™ system delivers a whole different snowmobiling experience.

- Driving Modes: A button on the console enables you to select one of three driving modes. Standard mode ensures a smooth start and linear acceleration; Sport enables full performance and quicker acceleration; ECO³ limits top speed and acceleration rates for a more relaxed, fuel-conserving ride.
- Finger Throttle: The throttle block can be rotated forward for use as a finger throttle, if preferred. Great for changing hand positions on a long ride and for more control in bumps.



Experience the advantage of XPS. Oil and care products engineered to extend the life of your ride, tested in the world's harshest conditions, and designed to optimize your vehicle's performance. Learn more at XPSlubricants.com

¹ Observed metric horsepower based on internal dyno test performed in optimal conditions.

² Data based on internal engineering trail testing.

³ Based on retail sale results as of December 31, 2019.

⁴ Data based on internal engineering trail testing in ECO mode.

X TERRAIN



“WE HAVE CONQUERED THE UNKNOWN AND OVERCOME THE CHALLENGES. EXHAUSTED. ECSTATIC. HUNGRY FOR MORE.”



A snowmobile that matches up to the challenges of adventures.

The Xterrain's performance and handling is a delight in soft snow. The sporty riding characteristics satisfy even the most demanding rider's needs.

XTERRAIN 3700 / 3900 XTERRAIN PRO 3900

ENGINES 600 EFI (3700), 600R E-TEC (3700, 3900, PRO 3900), 850 E-TEC (PRO 3900)
TRACK DIMENSIONS 400 x 3705 x 51 mm (3700), 400 x 3923 x 51 mm (3900), 400 x 3912 x 64 mm (PRO 3900)
SKI STANCE 996 mm (3700, 3900), 921 mm (PRO 3900)
SHOCK ABSORBERS HPG 36
FEATURES Blade DS+ skis, Heavy-duty rear bumper, Air radiator with fan (PRO 3900), Explorer front bumper (PRO 3900), Medium windshield (PRO 3900)

XTERRAIN PRO 3900
850 E-TEC



XTERRAIN RE 3700 / RE 3700 TURBO / RE 3900

ENGINES 850 E-TEC (RE 3700, RE 3900), 900 ACE Turbo (RE 3700 Turbo)
TRACK DIMENSIONS RE 3700 406 x 3705 x 51 / 64 (Spring only) mm
TRACK DIMENSIONS RE 3700 TURBO 406 x 3705 x 51 mm
TRACK DIMENSIONS RE 3900 406 x 3923 x 51 / 64 (Spring only) mm
SKI STANCE 996 mm (RE 3700, RE 3900), 1080 mm (RE 3700 Turbo)
SHOCK ABSORBERS KYB 40 HLCR Kashima (front), KYB 46 HLCR Kashima (rear)
FEATURES Blade DS+ skis, Heavy-duty rear and front bumpers, Low windshield, Handguards, ITC system with three driving modes (RE 3700 Turbo)

XTERRAIN RE 3900
850 E-TEC



XTERRAIN BRUTAL 3900

ENGINE 850 E-TEC
TRACK DIMENSIONS 500 x 3923 x 60 mm
SKI STANCE 996 mm
SHOCK ABSORBERS KYB 36 (front), KYB 46 Kashima (centre and rear)
SUSPENSION LFS (front), EasyRide (rear)
FEATURES Blade DS+ skis, Explorer front bumper, Air radiator with fan, Low windshield, Multi-LinQ plate, Brutal seat

XTERRAIN BRUTAL 3900
850 E-TEC



69 RANGER



“ROUGH CONDITIONS?
NO EXCUSES.”



The ruler of the super-wide track category is reborn.

69 Ranger is a snowmobile designed for heavy-duty tasks. It combines superb performance, endless traction and superior handling. Inimitably.

69 RANGER

ENGINE 900 ACE
TRACK DIMENSIONS 600 x 3968 x 32 mm
SKI STANCE 996 mm
SHOCK ABSORBERS HPG 36
SUSPENSION LFS with bended lower A-Arms (front), EasyRide with adjustment (rear)

FEATURES 2F/N/R gearbox with push-button reverse, Hitch, Air radiator with fan, Modular seat with heating, Multi-LinQ plate, Blade DS+ skis, Heavy-duty front bumper, iTC system with three driving modes



69 RANGER
900 ACE

69 RANGER SNOW CRUISER

ENGINE 900 ACE
TRACK DIMENSIONS 600 x 3968 x 32 mm
SKI STANCE 1080 mm
SHOCK ABSORBERS KYB 36 R (front), KYB 46 Kashima (centre and rear)
SUSPENSION LFS (front), EasyRide with adjustment (rear)

FEATURES 2F/N/R gearbox with push-button reverse, Hitch, Air radiator with fan, Modular 1+1 Luxury seat with heating, Adjustable handlebar riser, Multi-LinQ plate, Blade DS+ skis, iTC system with three driving modes



69 RANGER SNOW CRUISER
900 ACE

69 RANGER ALPINE

ENGINE 900 ACE Turbo
TRACK DIMENSIONS 600 x 3968 x 32 mm
SKI STANCE 1080 mm
SHOCK ABSORBERS HPG 36 (2 rear shocks)
SUSPENSION LFS (front), EasyRide Alpine (rear)

FEATURES 2F/N/R gearbox with push-button reverse, Hitch, Air radiator with fan, Modular seat with heating, Multi-LinQ plate, 1000 mm wide rear cargo rack, Blade DS+ skis, Heavy-duty front bumper, Ctek plug, iTC system with three driving modes, Readiness for Alpine accessories



69 RANGER ALPINE
900 ACE TURBO

59 RANGER



"I'VE ALWAYS LIKED WINTER. NOW I'M LOVING IT!"

Great features, great value.

Modern engine technology, unparalleled riding comfort and outstanding snow capability make 59 Ranger a master of versatility in work and play.

59 RANGER

ENGINE 600 EFI, 600 ACE

TRACK DIMENSIONS 500 x 3923 x 38 (600 EFI) / 44 (600 ACE) mm

SKI STANCE 996 mm

SHOCK ABSORBERS MC (front), HPG 36 (centre and rear)

SUSPENSION LFS (front), EasyRide (600 EFI rear) / EasyRide with adjustment (600 ACE rear)

FEATURES 600 EFI Blade DS+ skis, Multi-LinQ plate

FEATURES 600 ACE Hitch, 2F/N/R gearbox with push-button reverse, Air radiator with fan, Blade DS+ skis, Multi-LinQ plate, ITC system with three driving modes



59 RANGER
600 ACE



COMMANDER



**“AS WE DISCOVER NEW PLACES,
WE DISCOVER NEW PARTS OF OURSELVES.”**

The leader of all crossover snowmobiles does not need much presentation.

Someone has to lead the way. Commander does, by being respectful to its reputation for effortless handling, versatility and great on and off-trail performance.

COMMANDER

ENGINES 600R E-TEC, 900 ACE, 900 ACE Turbo
TRACK DIMENSIONS 500 mm x 3923 mm x 44 / 38 mm studded mm
SKI STANCE 996 mm
SHOCK ABSORBERS HPG 36
SUSPENSION LFS with bended lower A-Arms (front), EasyRide with adjustment (rear)
FEATURES Hitch, 2F/N/R gearbox with push-button reverse, Air radiator with fan, Heavy-duty front bumper, Blade DS+ skis, Multi-LinQ plate, iTC system with three driving modes (900 ACE & 900 ACE Turbo)

COMMANDER
900 ACE TURBO



COMMANDER LIMITED

ENGINES 600R E-TEC, 900 ACE, 900 ACE Turbo
TRACK DIMENSIONS 500 x 3923 x 44 mm
SKI STANCE 996 mm
SHOCK ABSORBERS HPG 36
SUSPENSION LFS with bended lower A-Arms (front), EasyRide with adjustment (rear)
FEATURES Hitch, 2F/N/R gearbox with push-button reverse, Air radiator with fan, Heavy-duty front bumper, Blade DS+ skis, Modular seat, Multi-LinQ plate, 70 L LinQ rear cargo box, Shovel, iTC system with three driving modes (900 ACE, 900 ACE Turbo)

COMMANDER
LIMITED
900 ACE



COMMANDER GRAND TOURER

ENGINES 900 ACE, 900 ACE Turbo
TRACK DIMENSIONS 500 x 3923 x 38 mm
SKI STANCE 1080 mm
SHOCK ABSORBERS KYB 36 R (front), KYB 46 Kashima (centre and rear)
SUSPENSION LFS (front), EasyRide with adjustment (rear)
FEATURES Hitch, 2F/N/R gearbox with push-button reverse, Air radiator with fan, Blade DS+ skis, Modular 1+1 Luxury seat with heating, Multi-LinQ plate, Adjustable handlebar riser, iTC system with three driving modes

COMMANDER
GRAND TOURER
900 ACE TURBO



BOONDOCKER

“THE INTERACTION
BETWEEN THROTTLE
AND GRAVITY.
OUR KIND OF
YIN AND YANG.”



Unparalleled handling and raw performance.

BoonDocker is the most radical deep snow sports sled. Used to overcoming boundaries. The promise of pure deep snow enjoyment.

BOONDOCKER 3900

ENGINE 600R E-TEC
TRACK DIMENSIONS 400 x 3912 x 64 mm
SKI STANCE 921 mm
SHOCK ABSORBERS HPG 36
SUSPENSION LFS (front), PPS²-DS+ -3900 (rear)
FEATURES Short tunnel,
Rear axle snowguard

BOONDOCKER
3900 600R E-TEC



BOONDOCKER RE 3700/3900 BOONDOCKER RE 3900 SHORT TUNNEL

ENGINE 850 E-TEC
TRACK DIMENSIONS 3700 406 x 3705 x 64 mm
TRACK DIMENSIONS 3900 400 x 3912 x 64 mm
SKI STANCE 996 mm, 921 mm (Short tunnel)
SHOCK ABSORBERS KYB 36 CR Kashima (front), KYB 46 HLCR Kashima (centre and rear)
SUSPENSION LFS (front), PPS²-3700 (3700 rear) / PPS²-3900 (3900 rear)
FEATURES Adjustable Kashima coated KYB shocks,
Short tunnel, Rear axle
snowguard

BOONDOCKER RE DS
3900 850 E-TEC



BOONDOCKER DS 3900 BOONDOCKER DS 4100

ENGINE 850 E-TEC
TRACK DIMENSIONS 3900 400 x 3912 x 76/64 mm
TRACK DIMENSIONS 4100 400 x 4178 x 76 mm
SKI STANCE 921 mm
SHOCK ABSORBERS KYB 36 Kashima
SUSPENSION LFS (front), PPS²-DS+ -3900 (3900 rear),
PPS²-DS+ -4100 (4100 rear)
FEATURES Short tunnel,
Rear axle snowguard

BOONDOCKER DS
3900 850 E-TEC



XTRIM

"THE NEED TO EXPLORE.
IT RUNS IN THE FAMILY."



Your key to memorable winter experiences.

Lynx Xtrim is easy to control and comfortable to ride. It is a dependable travel companion for both short day trips and longer adventures.

XTRIM

ENGINE 600 ACE
TRACK DIMENSIONS 406 x 3705 x 39 mm
SKI STANCE 996 mm
SHOCK ABSORBERS HPG 36
SUSPENSION LFS (front), PPS²-3700 (rear)
FEATURES Medium windshield, Heavy-duty rear bumper, Blade DS+ skis, ITC system with three driving modes

XTRIM
600 ACE



XTRIM SC

ENGINE 900 ACE
TRACK DIMENSIONS 406 x 3705 x 39 mm
SKI STANCE 996 mm
SHOCK ABSORBERS KYB 36 (front and centre), KYB 46 (rear)
SUSPENSION LFS (front), PPS²-3700 (rear)
FEATURES Medium windshield, Hitch, Air radiator with fan, Heavy-duty rear bumper, Blade DS+ skis, ITC system with three driving modes

XTRIM SC
900 ACE



XTRIM LX

ENGINE 600 ACE
TRACK DIMENSIONS 381 x 3487 x 34 mm
SKI STANCE 1080 mm
SHOCK ABSORBERS HPG 36
SUSPENSION LFS (front), PPS²-3500 (rear)
FEATURES Extra high windshield, Air radiator with fan, 2-up seat, Blade DS+ skis, Cargo rail, ITC system with three driving modes, Learning key

XTRIM LX
600 ACE



49 RANGER



“WINTER. OUR SEASON WITH NO LIMITS.”

The master of the Nordic landscapes.

Capable and agile. 49 Ranger is a reliable companion for demanding conditions. It thrives in the woods, in the mountains and in varying snow conditions.

49 RANGER

ENGINE 600 ACE
TRACK DIMENSIONS 406 x 3923 x 39 mm
SKI STANCE 996 mm
SHOCK ABSORBERS HPG 36
SUSPENSION LFS with bended lower A-Arms (front), EasyRide (rear)

FEATURES Extra high windshield, Air radiator with fan, Hitch, 2-up Light seat, Blade DS+ skis, Cargo rail, iTC system with three driving modes



49 RANGER
600 ACE

49 RANGER ST

ENGINE 900 ACE
TRACK DIMENSIONS 406 x 4141 x 39 mm
SKI STANCE 996 mm
SHOCK ABSORBERS HPG 36
SUSPENSION LFS with bended lower A-Arms (front), EasyRide with adjustment (rear)

FEATURES Extra high windshield, Air radiator with fan, Hitch, 2-up seat with backrest, Blade DS+ skis, Cargo rail, Explorer front bumper, iTC system with three driving modes (900 ACE)



49 RANGER ST
900 ACE

49 RANGER PRO

ENGINES 600R E-TEC, 900 ACE
TRACK DIMENSIONS 406 x 4141 x 59 mm
SKI STANCE 921 mm (600R E-TEC), 996 mm (900 ACE)
SHOCK ABSORBERS HPG 36
SUSPENSION LFS with bended lower A-Arms (front), EasyRide (rear)

FEATURES Extra high windshield, Air radiator with fan, Hitch, 2-up Light seat, Blade DS+ skis, Cargo rail, Explorer front bumper, iTC system with three driving modes (900 ACE)



49 RANGER PRO
600R E-TEC



**“THE FIERCER THE TRAIL,
THE GREATER THE PLEASURE.”**

RAVE

The undisputed leader of Nordic trails.

The Rave's performance and riding characteristics are unparalleled. It is mostly recognized by its receding tail lights. Experience the pace of the winners.

RAVE RE

ENGINES 600R E-TEC, 850 E-TEC
TRACK DIMENSIONS 381 x 3487 x 41 / 38 mm studded mm
SKI STANCE 1080 mm
SHOCK ABSORBERS KYB 40 HLCR Kashima (front),
 KYB 46 HLCR Kashima (centre and rear)
SUSPENSION LFS (front),
 PPS²-3500 (rear)



RAVE RE
850 E-TEC

RAVE ENDURO

ENGINE 600R E-TEC
TRACK DIMENSIONS 381 x 3269 x 41 mm
SKI STANCE 1080 mm
SHOCK ABSORBERS KYB 40 HLCR Kashima (front),
 KYB 46 HLCR Kashima (centre and rear)
SUSPENSION LFS (front), PPS²-3300 (Enduro calibration) (rear)
FEATURES Racing-type frame reinforcements,
 Four-piston RS brake, Aluminum throttle lever holder,
 slip-gear readiness



RAVE ENDURO
600R E-TEC



ANDREAS BERGMARK

ANDREAS BERGMARK DEFIES THE LAWS OF PHYSICS BY DOING UNBELIEVABLE TRICKS ON A SNOWMOBILE, THAT ARE THE RESULT OF THE YEARS OF CONTINUOUS PRACTICE. THEREFORE, THERE IS NO REASON FOR AN ORDINARY RIDER TO TRY THEM.

Long journeys to riding places and countless hours of practicing jumps. All of this sweating for just one or two seconds of flight in the air.

What on earth is it all about?

- During those seconds in the air, I feel more alive than ever. At that moment everything becomes very clear, says freerider Andreas Bergmark.

Known for his wild tricks on a snowmobile, the Swede goes onto the scene in the back country, on the slopes of hills and mountains; the video footage filmed there has gathered countless views on social media in recent years.

WEEKLY ALLOWANCE FOR GASOLINE

Andreas did backflips back in his home yard in Fällfors, a small village near Skellefteå, already when he was a child. At the time, his vehicle was a snowracer, and old home videos show the young daredevil jumping on his sleigh from the upper terrace of a two-story house onto a snowbank. An old snowmobile was also put to test when he jumped it in the yard.

- Our house is surrounded by forests, and there was little to do. That's why my dad got me and my sister vehicles when we were little. I got hooked. I didn't want to do anything else but ride.

In winter, Andreas rode a snowmobile after school for hours, and summers were spent on a dirt bike together with his peers. 20 liters of gasoline served as his weekly allowance.

- I am very grateful to my parents for my childhood.

“EVERYTHING IS SO CLEAR IN THE AIR”

CHASING THE NEXT LEVEL

After having bought his first snowmobile, Andreas' swinters were all about snowmobiling. He drew inspiration from the videos of Slednecks and RuffRiders, but he never thought he could ride like his idols in those films.

- However, when I continued to practice, I noticed at some point that I had reached that level.

In the winter of 2016, Andreas began to appear on snowmobile videos of Northern Light Films, and in the same season he started to collaborate with Lynx.

- Then we started to do backflips on a sled with Adam Thomelius. We started to get tremendous feedback from excited viewers, which pushed us even further.

Andreas made his first trip to North America in winter 2017, and that trip has been one of the most memorable. He returned home with a memory of a stunt that he considers to be the greatest achievement of his career so far.


- We were with the camera crew in Revelstoke, Canada, riding in great snow amidst spectacular scenery. Before we went home, Adam and I, both did a backflip over a large cliff called the Turtle Gap. It was the sickest stunt I've ever done, and I would not do it again.


A barrel roll, which is rolling the sled in the air around its longitudinal axis, is another one of Andreas's trademark stunts. After hearing that Adam had pulled the stunt first in the world, Andreas decided to follow and performed his first barrel roll in the back country of Canada in the spring of 2018.

- It's a very demanding stunt. Timing is the hardest. Sometimes I have tried up to 25 times before I get it right.

Watch Lynx documentary about Andreas Bergmark on social networks

 [lynx_snowmobiles](#)

 [Lynx Snowmobiles](#)

 [Lynx Snowmobiles](#)

TALENT ON LYNX VIDEOS

In the spring of 2018, Andreas took part in Lynx lineup shoot for the first time. Since then, he has been seen on the Boon-Docker commercials every year.

- It's great to get to the back country with a big camera crew, but with this also comes pressure, as you often have to nail it on the first try. I can be one of the first to ride future models and I can also give feedback on them.

In the spring of 2019, Andreas was given the opportunity to promote the Nordic snowmobile maker on the other side of the ocean, as he travelled to North America with another Lynx ambassador, Pontus Lundmark. They had Lynx's next year's models with them.

- Lynx isn't sold in North America, but the locals who got to try the sleds were really impressed. The trip was great, by the way: for the first time I managed to land a 270 degrees jump successfully. 360 degrees is the next target. I am not quite there yet, but I am getting close.

The voice of the Swede conveys passion when he describes his attitude towards snowmobiling. The sport that, according to Andreas Bergmark, is a big part of his life and that he has been growing up with since he was a kid.

- Snowmobiling is simply the reason why I love winter.

Andreas Bergmark



LYNX



**PARTS
ACCESSORIES
CLOTHING
2021**

A BRP BRAND 

* SISU IT TAKES

...TO BE FIRST ON AND LAST OFF SNOW. CONDITIONS ARE OFTEN FIERCE. AND WE WOULDN'T WANT IT ANY OTHER WAY.

WITH THE RIGHT GEAR SISU COMES EASIER. SINCE 1968 THE ORIGINAL LYNX GEAR HAS BEEN MADE TO ENDURE HEAVY USE FOR MANY YEARS AND ADVENTURES TO COME, JUST LIKE YOUR ORIGINAL LYNX SLED.

**Sisu is a Finnish concept described as stoic determination, tenacity of purpose, grit, bravery, resilience, and hardiness and is held by Finns themselves to express their national character.
- Wikipedia*

CLOTHING

- 4 Quantum
- 7 Tec Layer
- 10 Stamina
- 11 Mid Layers
- 12 Technologies
- 14 Squadron
- 16 Kids
- 17 Ogio Bags
- 18 Sportswear
- 20 Headwear
- 21 Racing
- 22 Boots & Socks
- 23 Gloves
- 24 Helmets
- 27 How to measure

ACCESSORIES

- 28 Back Country Accessories
- 30 LinQ
- 31 Snowmobile Models & Platforms 2021-2018
- 32 Skid plates, Protectors & Reinforcement
- 33 Towing
- 34 Wind Protection & Mirrors
- 36 Bumpers
- 38 Skis
- 39 Suspension
- 40 Storage
- 44 Ergonomy
- 44 Electrical and rewind starters
- 45 1+1 seats & accessories
- 46 Electrical
- 46 Transmission
- 48 69 Ranger Alpine Accessories
- 49 Covers
- 50 Trailing & covers
- 51 Cooling
- 51 Universal
- 52 XPS Oils & Service
- 54 Parts & Performance
- 55 Drive Belts
- 55 Tracks



PRIMALOFT

Sympatex

CORDURA

FREE TO MOVE. FREE TO FOCUS ON THE RIDE.

On the mountain it's just you and your sled. No distractions.

The original Lynx Quantum riding gear won't let anything come between you and your ride.

Its lightweight shell gives you freedom to drill deeper into drifts and drives.

And with a breathable, waterproof membrane and fabrics that draw out moisture, you won't get wet. Even when it's wild.

Quantum

QUANTUM

Conquer the deep snow with non-compromise technical gear

The original Lynx Quantum riding gear offers you the best lightweight performance for mountain and deep snow riding. High-end shell clothing with Cordura fabrics and Sympatex membrane has been developed to meet every freerider's demands.



NEW

LYNX QUANTUM JACKET

650122_90 Black
650122_84 Bright Blue
650122_06 Bright Red

Sizes: XS - 3XL.

Lightweight shell jacket for active riders.

NEW IMPROVED STYLE AND FITTING

- 3 New color options!
- 100% waterproof, 100% windproof, optimally breathable Sympatex material
- Cordura reinforcement fabric on high wear areas
- Mesh lining
- Water repellent YKK zippers

Available also at your dealer:

650122_70 Green
650122_80 Dark Blue

Complete styles for extra warmth with Lynx Packable jackets or Lynx Hybrid jacket and Lynx Hybrid Shorts



NEW

LYNX QUANTUM PANTS

651124_90 Black
651124_84 Bright Blue

Sizes: XS - 3XL.

Lightweight pants for active riders.

NEW IMPROVED STYLE AND FITTING

- 100% waterproof, 100% windproof, optimally breathable Sympatex material

- Cordura reinforcement fabric on high wear areas
- High front and back bib panels with stretch fabric on waist
- Front and full-length side water repellent YKK zippers

Available also at your dealer:

651116_90 Black
651116_80 Dark Blue



NEW

LYNX QUANTUM ONEPIECE SUIT

650123_90 Black
650123_06 Bright Red
650123_84 Bright Blue

Sizes: XS - 3XL.

Lynx Quantum one-piece suit is specially designed for active riding in deep snow.

NEW IMPROVED STYLE AND FITTING

- 3 New color options!
- 100% waterproof, 100% windproof, optimally breathable Sympatex material
- Primaloft Gold insulation and fleece lining on seat
- Cordura reinforcement fabric on high wear areas
- Comfortable fit that allows freedom of movement
- Water repellent YKK zippers

Available also at your dealer:

650123_80 Dark Blue
650123_70 Green

DISCOVER THE PERFORMANCE OF SYMPATEX MEMBRANE



PTFE-FREE AND PFC-FREE MEMBRANES AND LAMINATES

100% WINDPROOF AND WATERPROOF PROTECTION

DYNAMIC BREATHABILITY

LIFETIME WARRANTY

100% RECYCLABLE MEMBRANE & RECYCLABLE AND RECYCLED LAMINATES



Sustainability meets Performance

- WATERPROOF
- BREATHABLE
- WINDPROOF

- RECYCLABLE
- PFC- & PTFE-FREE
- CO₂ NEUTRAL

SYMPATEX.COM

HOW TO LAYER RIGHT

– HOW TO DRESS TO MAKE THE MOST OF YOUR WINTER!

Enjoying the winter is often just a matter of dressing up. The Lynx clothing lineup offers a wide range of options for wearing comfortable layers. Make sure that you stay comfortable and that you are dressed for the conditions and the temperature – both on the snowmobile and in other winter activities.

1 Wearing properly layered clothing starts with a high-quality base layer. A base layer of merino wool or technical fibers wicks moisture to the outer layers and keeps the skin dry, ensuring that you stay warm.

2 The mid layer helps to regulate the body temperature. You can add or take off mid layers depending on the weather and your activity level. For example, the Lynx Hybrid jacket and shorts are designed for active riding in freezing weather. The Primaloft insulation used in the Hybrid products keeps you warm, while a set of strategically placed stretch channels ensures that moisture is actively wicked out through the outer layer. Lynx clothing lineup offers three new insulation jacket options and other mid layer products that make sure that your riding experience is enjoyable in all conditions.

3 Insulated layer. Add or adjust the warmth with insulated layer. Insulated jacket protects from the elements with additional warmth. Insulated jacket can be used alone or under shell jackets. Lynx offers down insulated packable jackets and Hybrid jacket and shorts for ideal layering.

4 Choose the outermost layer based on the temperature, the length of the trip and your riding style. You can choose from a wide range of one- and two-piece suits. The high-quality materials of Lynx clothing range's outermost layer protect you from the wind and water, while also taking care of breathability and temperature regulation. We use Sympatex and RPM Max membranes in the outermost layer. They have been selected and tested with care to meet the needs of demanding riders and other winter sports enthusiasts. The season's new outer layer items include one-piece suits for men, women and children in the Lynx Squadron lineup.



SEE MORE PRODUCTS IN BRPPAC.COM

TEC LAYER

Stay warm and dry in extreme conditions

Using high performance fabrics and insulation, the Lynx Tec-Layer product range offers a combination of moisture management, warmth, packability and protection in changing weather conditions and multiple activities. The original Lynx baselayers together with insulated lightweight Lynx midlayers give you the degree of adaptability, that will keep you comfortable during your toughest snowmobiling adventures.



NEW
LYNX TECH FLEECE JACKET
659106_90 Black

Available for summer season 2020
Sizes: XS - 3XL
Technical fleece jacket with hood.



NEW
LYNX TECH FLEECE JACKET W
659101_39 Raspberry

Available for summer season 2020
Sizes: XS - 2XL
Technical fleece jacket with hood. Ladies fit.



LYNX ONEPIECE MIDLAYER
659099_90 Black • Men's
659100_90 Black • Ladies'

Sizes: XS - 3XL (men), XS - 2XL (ladies)

Ideal under Onepiece suit!

Thermal fleece midlayer onepiece for cold riding conditions and after adventures.
• Constructed from super soft stretchy Performance Fleece.
• YKK Two Way Open front zipper with semi-lock sliders.
• Rear zipper for easy seat opening.
• Flatlock seams.



LYNX BASE SHIRT AND PANTS
659091_90 Black • Men's shirt
659092_90 Black • Men's pants
659094_90 Black • Ladies' shirt
659095_90 Black • Ladies' pants

Sizes: XS - 3XL (men), XS - 2XL (ladies).
Coconut fiber actively promote evaporative cooling and odor absorption, and no filter moisture out while trapping warmth in. Mesh paneled in specific areas for better ventilation and accelerated drying.
68% Polyester, 32% Coconut Fiber



LYNX MERINO BASE SHIRT AND PANTS
659088_90 Black • Men's shirt
659089_90 Black • Men's pants
659090_90 Black • Ladies' shirt
659093_90 Black • Ladies' pants

Sizes: XS-3XL (men), XS - 2XL (ladies)

Flatlock stitched seams. Dries quickly. Warm and comfortable even when wet. Shirt and pants sold separately. 100% Merino wool.

Tec Layer

CONDITIONS CHANGE FAST. KEEP UP OR GO HOME.

Out in the elements nature's the boss. Too hot or cold? Ride's over. The original Lynx Tec Layer range gives you climate control.

Three layers. Three functions:

- Base:** for warmth
- Mid:** for adaptability and insulation
- Outer:** for weather protection

Pack them up and go. Wear one, wear them all. There are no rules. Just you, your sled and nature's toughest trails.



NEW
LYNX HYBRID JACKET
659109_90 Black

Sizes: XS - 3XL.

Light and versatile mid layer jacket for active riders.

NEW IMPROVED STYLE AND FITTING

- Strategically placed elastic knit material and panels with insulation.
- Ultralight water repellent material
- Primaloft Black ECO Insulation
- YKK zippers



NEW
LYNX HYBRID SHORTS
659110_90 Black

Sizes: XS - 3XL.

Light and versatile mid layer shorts for active riders.

NEW IMPROVED STYLE AND FITTING

- Ultralight water repellent material
- Primaloft Black ECO Insulation
- Higher back waist and above knee length
- 2-way YKK zippers at both sides.



NEW
LYNX PACKABLE DOWN JACKET
659107_09 Grey • Men's

Sizes: XS - 3XL.

Primaloft Down blend with lightness and warmth! Use alone or under shell layer for maximum warmth.

NEW IMPROVED STYLE AND FITTING

- New lighter weight version
- Light Teflon water repellent shell material
- YKK Front zippers
- Fitted patterning



NEW
LYNX PACKABLE DOWN JACKET
659108_36 Pink • Ladies'

Sizes: XS - 2XL.

Primaloft Down blend with lightness and warmth! Use alone or under shell layer for maximum warmth.

NEW IMPROVED STYLE AND FITTING

- New lighter weight version
- Light Teflon water repellent shell material
- YKK Front zippers
- Fitted patterning

LYNX DOWN BLEND JACKET

659076_90 Black • Men's / 659077_30 Red • Ladies' • Sizes: XS - 3XL (men), XS - 2XL (ladies).



Stay warm and dry in extreme conditions

The original Lynx Stamina riding gear offers you the best functional performance for the longest and toughest snowmobiling adventures. RPM Max performance fabric and Primaloft insulation will give you ultimate protection also in extreme weather conditions. Lynx Stamina riding gear endures heavy use for many years and adventures to come – just like your Lynx sled.

STAMINA VARIO JACKET

650124_30 Red
650124_90 Black
650124_09 Grey

Sizes: XS - 3XL

Performance shell jacket with removable inner vest for riding on and off-trail.

- Removable insulated (Primaloft Silver) inner vest with zipper and loop attachment.
- All seams sealed
- Waterproof YKK 2-way zipper at front opening
- Waterproof YKK 1-way zippers at pockets and ventilations
- 2 front ventilation pockets with mesh
- Prints on shoulder area to optimized grip for backpack.



NEW

LYNX STAMINA VARIO PANTS

651117_90 Black

Sizes: XS - 3XL

Performance insulated pants for riding on and off-trail.

- Primaloft Black insulation
- RPM Max Shell
- Highly windproof, waterproof and breathable.
- 100% seams and logos sealed.
- Back suspender divider to avoid slipping off.
- Adjustable waist.
- 3/4 length water-resistant side zippers.
- Storm gaiters.
- Pre-shaped legs and padded knees.
- Fleece-lined seat



LYNX FUR HAT

6652787290 S/M
6652787390 L/XL

Sizes: S/M, L/XL.
Extremely warm. Wind and waterproof surface, thermal fake fur lining. Lynx logo on the sides. 100% polyester.



STAMINA AVENTURA JACKET AND PANTS

650125_82 • Men's jacket • Indigo Blue
651118_82 • Men's pants • Indigo Blue

650126_32 • Ladies' jacket • Wine
651119_32 • Ladies' pants • Wine

Sizes: XS - 3XL (men), XS - 2XL (ladies)

Insulated, functional suit for adventure & touring segment.

- Waterrepellent, windproof, breathable and durable shell material. RPM Max.
- Reinforcement fabric on high wear areas; seat, knees, hem and inseam.
- All seams sealed.
- Insulation: Primaloft Black



**PUSH HARDER.
GO FURTHER.
RIDE LONGER.**

The original Lynx Stamina pushes riding gear to the limit – ultimate protection and performance for your longest, wildest adventures.

It's tough enough for whatever winter throws at you. Arctic winds. Ice. Sub-zero temperatures. No problem.

So grab that extra hour on the snow. One more trail. One more mile. First on, last off. All winter.

stamina

TECHNOLOGIES

OUR RIDING GEAR AND TECHNICAL WEAR ARE BUILT WITH ADVANCED TECHNOLOGIES THAT PROTECT YOU WITH WARMTH, WATERPROOFNESS, LIGHTWEIGHT AND BREATHABILITY.



CORDURA®

Often added to garment zones that need extra durability, such as arms, back hem, inner legs, and crotch for tough yet flexible comfort.

TEFLON DWR®

More than an ordinary DWR (Durable Water Repellent) - the Teflon DWR used on Lynx gear repels water, oil and dirt to keep riders dry and protect against stains.

RPM/RPM MAX

Coatings that provide maximum waterproofness, windproofness and breathability.

RPM Max: All seams & logos sealed

RPM: Critical seams & logos sealed

PRIMALOFT®

A high-performance insulation with the full spectrum of benefits to brave the elements. Warmer, drier, softer and more compressible than any other synthetic insulation.

YKK

We use the world's best - YKK zippers - recognized for quality and reliability.



COMFORT IS FREEDOM



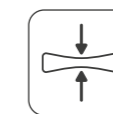
The PrimaLoft® logo is your cue that you're getting the highest performing materials for comfort in any condition.



Warmth without bulk
A high warmth-to-weight ratio means you don't need bulk to stay warm



Water-resistant
Absorbs less moisture from the start so you stay drier and warmer



Packable
Packs down easily for stashing in tight spaces



Lightweight
All the warmth you need with little weight



Superior softness
Enjoy unsurpassed softness that feels great on your body and contributes to a flattering fit

DISCOVER MORE AT [PRIMALOFT.COM](https://www.primaloft.com)

PrimaLoft® is a registered trademark of PrimaLoft, Inc. ©2019 PrimaLoft, Inc.

SQUADRON

PRIMALOFT.

YKK

RPM

FOLLOW YOUR TRIBE. CUT YOUR OWN TRAIL.

There are Lynx riders, then there's everyone else. The original Lynx Squadron riding gear marks you as one of the tribe.

We follow trends but are never slaves to style. We know what looks good and what works. What you need for the ride: Warmth without bulk. Tough fabrics. Sealed seams. Ventilation.

Now all you need to do is zip up and hold on tight. It's playtime.

SQUADRON



Make the most of your winter!

The original Lynx Squadron riding gear offers you the best functional performance for all your winter activities. With both practical and trendy options, the Squadron range has you covered for work, play and day-to-day living.

SEE MORE PRODUCTS IN BRPPAC.COM

NEW

LYNX SQUADRON ONEPIECE SUIT INSULATED

650130_90 Black
650130_12 Orange

Sizes: XS - 2XL.

NEW insulated one-piece suit for men
Insulated one-piece with 80gr Primaloft Black insulation

2 Color Options

New Lynx Cypher used in Graphics

- All seams sealed RPM MAX
- Reinforcement fabric on high wear areas
- Two-way front zipper
- Waterproof YKK zippers
- Front ventilations on armpit with zipper and mesh
- Inner adjustable system on waist and removable suspenders inside.



NEW

LYNX SQUADRON ONEPIECE SUIT INSULATED W

650128_39 Raspberry
650128_70 Lime Green

Sizes: XS - XL.

Insulated one-piece with ladies fit.

2 New Color Options

New Lynx Cypher used in Graphics

- All seams sealed
- Two-way front zipper
- Waterproof YKK zippers
- Front ventilations on armpit with zipper and mesh
- Inner adjustable system on waist and removable suspenders inside.

Also available at your dealer:

650128_09 Grey
650128_30 Red



NEW

LYNX SQUADRON ONEPIECE SUIT

650127_70 Lime Green
650127_12 Orange
650127_37 Camo

Sizes: XXS - 2XL.

Light and multifunctional shell one-piece suit for on and off-trail riding.

3 New Color Options!

New Lynx Cypher used in Graphics

- Mesh lining
- Primaloft Black insulation on seat
- RPM MAX for moisture management
- All seams and logos sealed
- YKK zippers

Complete styles for extra warmth with Lynx Packable jackets or Lynx Hybrid jacket and Lynx Hybrid Shorts



SEE MORE PRODUCTS IN BRPPAC.COM



KIDS

A must for family expeditions: keeping the next generation of Lynx riders warm and happy.



NEW

LYNX SQUADRON KIDS OPS

657006_39 Raspberry
657006_70 Lime Green

Sizes: 4 (104-110), 6 (116-122), 8 (128-134), 10 (140-146)

Colorful Lynx Squadron Kids OPS is developed together with kids. Thermal loft insulation is a perfect choice for riding and playing in the snow.

- 2 New Color Options
New Lynx Cypher used in Graphics
- Thermal loft insulation
 - RPM Max for moisture management and all seams sealed
 - Front closure and pockets with waterproof YKK zippers
 - Adjustable waist

Available also at your dealer:
657006_30 Red
657006_83 Royal Blue

SEE MORE PRODUCTS IN BRPPAC.COM



NEW

LYNX LOGO JUNIOR HOODIE

661014_09 Grey
661014_39 Raspberry

Available for summer season 2020
Sizes: 5-6, 7-8, 10-12, 14-16
Hoodie for kids with visible Lynx design.



NEW

LYNX STRIPE BEANIE KIDS

6652810009 Grey
6652810036 Pink

Size: One size
Trendy beanie for kids with new Lynx cypher.



NEW

LYNX JUNIOR BOOTS

667111_90 Black

New warm boots for kids and juniors!
Sizes: 1, 2, 3, 4, 5, 6

- Waterproof
- Rubber outline.
- Thick removable liner
- Lynx spirited design
- Height: 12" (30.5 cm)

OGIO BAGS

LYNX DUFFEL BAG

6681150009

Black

LYNX BACKPACK

6681140009

Black

LYNX HELMET BAG

6681120009

Black

LYNX GEAR BAG

6681130009

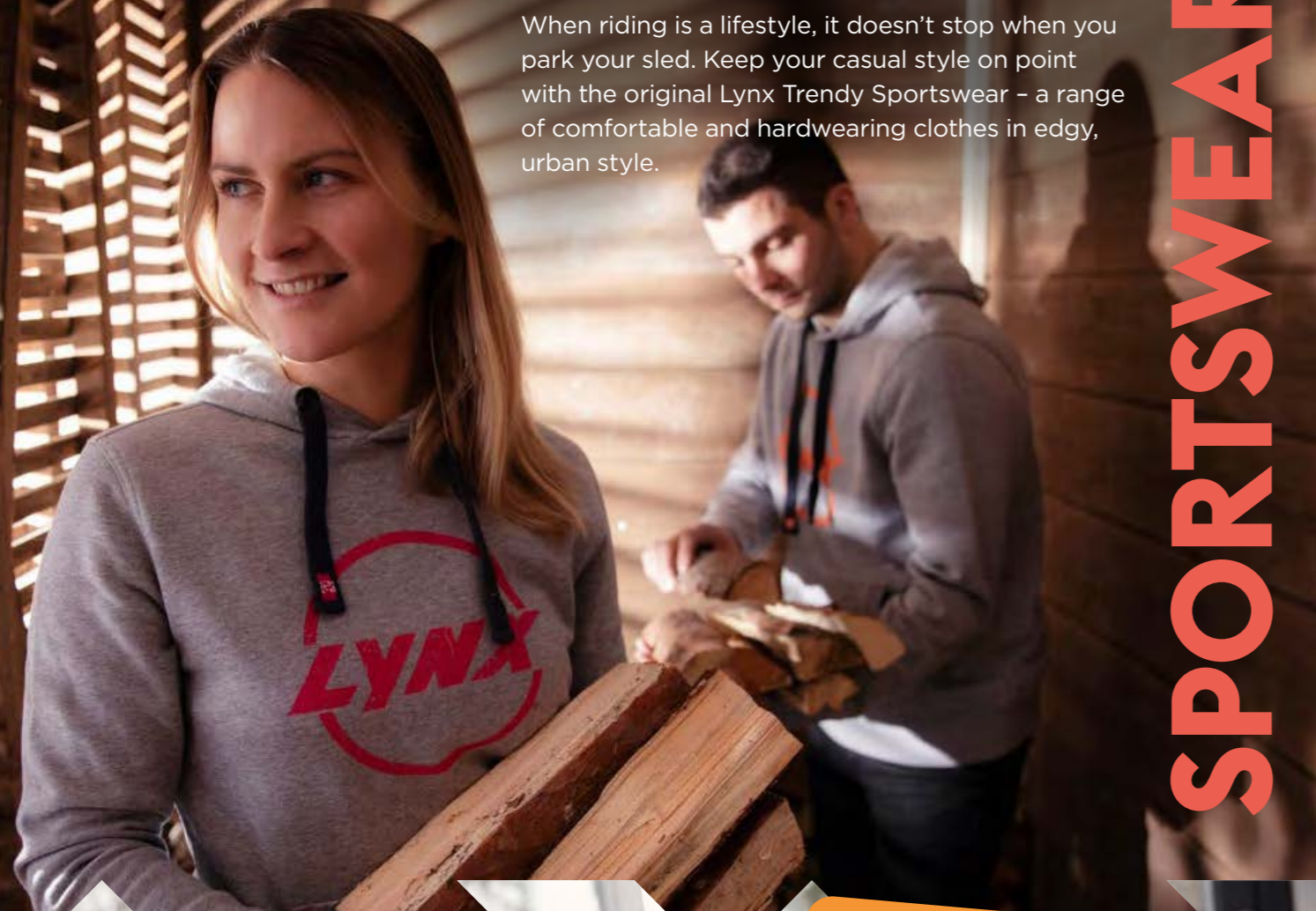
Black



Take your Lynx spirit to the streets!

When riding is a lifestyle, it doesn't stop when you park your sled. Keep your casual style on point with the original Lynx Trendy Sportswear – a range of comfortable and hardwearing clothes in edgy, urban style.

SPORTSWEAR



LIVING FOR THE RIDE. ON OR OFF THE SNOW.

Passion for the ride doesn't die when you park your sled. It's in your blood. Your soul.

The original Lynx Sports takes that spirit from slopes to street, with a range of pitstop-inspired casualwear for your free time.

Hanging out with your tribe. Buzzing from your last big ride. Plotting the next one.

Wherever you are, with Lynx you're always adventure ready.

SPORTS



NEW
LYNX LOGO ZIP HOODIE
659102_09 Grey

Available for summer season 2020
Sizes: XS - 3XL
Hoodie with visible Lynx design.



NEW
LYNX LOGO ZIP HOODIE W
659103_09 Grey

Available for summer season 2020
Sizes: XS - 2XL.
Hoodie with visible Lynx design. Ladies fit.



NEW
LYNX CLASSIC T-SHIRT
662090_90 Black

Available for summer season 2020
Sizes: XS - 3XL
T-Shirt with Lynx Racing spirit.



NEW
LYNX CLASSIC LONG SLEEVE T-SHIRT
660031_90 Black

Available for summer season 2020
Sizes: XS - 3XL
Long sleeved shirt with Lynx Racing spirit.



NEW
LYNX SQUADRON HOODIE
659104_09 Grey

Available for summer season 2020
Sizes: XS - 3XL
Trendy hoodie with kangaroo pocket.



NEW
LYNX SQUADRON HOODIE W
659105_09 Grey

Available for summer season 2020
Sizes: XS - 2XL
Trendy hoodie with kangaroo pocket. Ladies fit.



NEW
LYNX SQUADRON T-SHIRT
662088_09 Grey
662088_90 Black

Available for summer season 2020
Sizes: XS - 3XL
Trendy T-shirt with Lynx slogan.



NEW
LYNX SQUADRON T-SHIRT W
662089_09 Grey

Available for summer season 2020
Sizes: XS - 2XL
Trendy T-shirt with Lynx slogan. Ladies fit.



NEW
LYNX LOGO T-SHIRT W
662087_90 Black

Available for summer season 2020
Sizes: XS - 2XL
T-Shirt with visible Lynx design. Ladies fit.



LYNX LOGO T-SHIRT
662084_09 Grey

Available for summer season 2020
Sizes: XS - 3XL
T-Shirt with visible Lynx design.



LYNX AVENTURA FLANNEL SHIRT
660029_09 Grey • Men's

Sizes: XS - 3XL
Shell: 100% cotton
Lining: 65% cotton 35% polyester



LYNX AVENTURA FLANNEL SHIRT W
660030_09 Grey • Ladies'

Sizes: XS - 2XL
Shell: 100% cotton
Lining: 65% cotton 35% polyester

20 HEADWEAR



NEW

LYNX CLASSIC CAP

6652860090 Black
6652860006 Fire Red

Available for summer season 2020

Size: One size.
Cap with Lynx Racing spirit.



NEW

LYNX SQUADRON FLAT CAP

6652880090 Black
6652880037 Camo

Available for summer season 2020

Size: One size.
Trendy Cap with Lynx slogan



NEW

LYNX TECH THIN BEANIE

6652850090 Black
6652850039 Raspberry

Available for summer season 2020

Size: One size.
Technical fleece beanie.



NEW

LYNX TREND BEANIE

6652900009 Grey
6652900090 Black

Size: One size
Lighterweight beanie with new Lynx cypher.



NEW

LYNX REVERSIBLE BEANIE

6652890090 Black
6652890009 Grey

Size: One size
Reversible beanie with Lynx logo.

LYNX BASIC BALACLAVA

6651040090 Black
6651040018 Mixed Color

One size.
Antibacterial material with Anti-itching seams. Sublimated option with Lynx graphics matching with Anniversary riding jersey. Black color option; solid dyed black.
91% Polyester, 9% Spandex, brushed inner layer.

LYNX TECHNICAL BALACLAVA

6651030090 Black

One size.
Technical balaclava designed for the coldest riding conditions. Ultra-wide skirt provides max windprotection. Flatlock stitching for comfort. Neoprene nose piece / breath deflector. Moisture-wicking. Highly breathable. Solid dyed black color option.
Front: 100% Polyester.
Nose: 60% Neoprene, 40% Nylon.
Back: 91%, Polyester 9%, Spandex.
Not illustrated



SEE MORE PRODUCTS IN BRPPAC.COM

RIDE WITH YOUR TRIBE. AHEAD OF THE PACK.

The right riding gear gives you the edge. The extra inch that makes the difference.

The original Lynx Racing range takes our winning spirit from the track to your team.

In legendary Lynx red, you'll be in each other's sights during every blood-pumping, heartpounding race.

From start to finish. As you cross the line. And on the podium.

RACING



RACING



Helmets

→ P. 24

Carry your team colors proudly!

Snowmobile racing is more than just a passion: it requires tenacity, commitment and an adequate apparel. The Lynx Racing clothing, made out of high-quality materials, provides you a functional moisture management, warmth and protection every time you hit the trail. Add a final touch to your winning look, even in the days between races.



NEW

LYNX RACE SNOWCROSS JACKET

650129_12 Orange

Sizes: XS - 2XL

High performing softshell jacket for racing. Windproof, flexible and optimally breathable material. Ventilation pockets at front and ventilation openings at back.

NEW

LYNX WARM UP JACKET

6520200018 Mixed color

One size.
Improved style and fitting

Ultimate protection from freezing wind and cold weather.

- Removable hood and spacious pockets on both sides.
- 100% waterproof, 100% windproof
- Thermal loft insulation

SEE MORE PRODUCTS IN BRPPAC.COM

STAY SAFE. NO COMPROMISES. NO LIMITS.

For your toughest rides, you need extra protection: The original Lynx Tecnowear.

Our range of helmets, goggles, boots, gloves, bags and snow gear is designed for your safety in extreme conditions.

Its cutting-edge tech helps you stay safe and comfortable without weighing you down or holding you back - leaving you free to enjoy the ride.

TECNOWEAR

TECNOWEAR

For your toughest rides, you need extra protection: The Original Lynx Tecnowear. Our range of helmets, goggles, boots, gloves, bags and snow gear is designed for your safety in extreme conditions.



TEC+ REC BOOTS

444240_90 Black • Men's

Sizes: 5 -13
Designed to provide a high level of warmth, while retaining great mobility. These boots are constructed for long-life and long days on the snow.

- Tough abrasion resistant leather outer.
 - Breathable waterproof membrane.
 - Limit of comfort temperature range: -40°C to -50°C*
- *Rating of Thermal Comfort CTT/PTC1, CTT Group



TEC+ REC BOOTS

444241_90 Black • Ladies'

Sizes: 6 -10
Designed to provide a high level of warmth, while retaining great mobility. These boots are constructed for long-life and long days on the snow.

- Tough abrasion resistant leather outer.
 - Breathable waterproof membrane.
 - Limit of comfort temperature range: -40°C to -50°C*
- *Rating of Thermal Comfort CTT/PTC1, CTT Group

SEE MORE PRODUCTS IN BRPPAC.COM



LYNX COMPRESSION SOCKS

667011_94 Black with graphics

Sizes: S (35-38), M (39-41), L (42-44), XL (45-47)
53% Polyamide
34% Merino wool
8% Polypropylene
5% Elastane

LYNX THERMAL SOCKS

667012_94 Black with graphics

Sizes: S (35-38), M (39-41), L (42-44), XL (45-47)
61% Polyamide
23% Polyester
10% Merino wool
6% Elastane

TEC+ BOOTS

444236_90 Black

Sizes: 5 - 13

Designed for active riders who demand performance and comfort.

- Removable insole.
- Unisex, smaller sizes added for ladies.



NEW

LYNX QUANTUM 2.0 GLOVES STX

666044_90 Black

Sizes: XS-2XL
Light and warm gloves for Deep snow riding.
Sympatex insert with 100% waterproof, windproof and breathability.
Full leather fingers and palm for perfect fit and feel.

2 layer Shell fabric with Sympatex insert
Thinsulate (40g) insulation
Micro Active lining
Full leather fingers
Powder Cuff, Wristband, Stopper system
Pull and penetrate loop



LYNX QUANTUM LITE GLOVES

666041_90

Sizes: XS - 3XL
Gloves for high-activity riding in warm conditions. Lightweight, windproof warmth, and ultimate breathability.
Genuine Goat leather palm with grip reinforcement. Waterguard membrane. Adjustable Velcro tab at wrist. Reflective detailing.



LYNX BASE RIDING GLOVES

666037_90 Black

Sizes S - 3XL.
Water and windproof Hipora membrane. Moisture transferring lining. Padded knuckles. Silicone print on palm for improved grip. Adjustable mid-length gauntlet.



LYNX TEAM GLOVES

666040_94 Black with graphics

Sizes: S - 3XL
A lightweight glove without insulation for warm weather riding or for hand protection during short stops.



LYNX STAMINA MITTENS

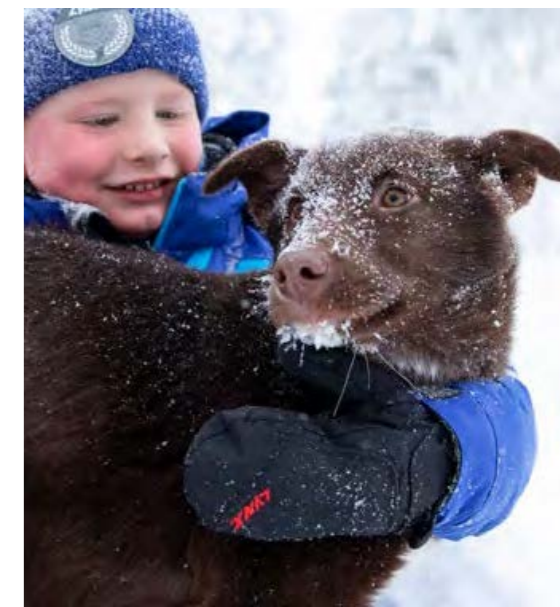
666042_90 Black

Sizes: XS - 2XL
A classic glove for very cold conditions.
• Leather palm with grip reinforcement.
• Insulated with down at hand for superior heat.
• Waterguard membrane.

LYNX SQUADRON MITTENS KIDS

666043_90 Black

Sizes: 6-8, 10-12, 14-16
A classic glove for very cold conditions.
• Leather palm with grip reinforcement.
• Insulated with down at hand for superior heat.
• Waterguard membrane.





NEW
LYNX RADIEN 2.0 CROSS HELMET

- 664052_84 Bright Blue (Matt)
- 664052_06 Bright Red (Matt)
- 664052_18 Mixed Color (Shiny)

Sizes: XS - 2XL
The Lynx Radien snocross-style helmet delivers protection beyond typical helmet performance thanks to its advanced M-FORGE® Composite technology construction. It is the ultimate helmet for lightweight protection and superior rider comfort. Double D-ring closure (Mixed Color) Fidlock system (other colors). Face Mask included.

Also available at your dealer:
664052_90 Black
664052_80 Blue



NEW
LYNX RADIEN CROSS HELMET PEAK

- 6691470084 Bright Blue (Matt)
- 6691470006 Bright Red (Matt)
- 6691470018 Mixed Color (Shiny)
- 6691470090 Black
- 6691470080 Blue

One size
Not illustrated

LYNX RADIEN HELMET CHIN CURTAIN

- 6691500090 Black

LYNX RADIEN CHEEK PADS

- 669151_90 Black

Sizes: XS - 2XL.

LYNX RADIEN HELMET TEC MASK

- 6691560690 XS/S/M
- 6691560990 L/XL/2XL

LYNX RADIEN HELMET SPARE SCREW KIT

- 6691480090 Black



OXYGEN HELMET

- 929019_93 Matte Black
- 929019_90 Black
- 929019_01 White
- 929019_12 Orange

Sizes: XS - 3XL.

- Electric visor included.
- Available in 3XL.
- Offered with amber sun visor for best vision in snow conditions.
- M-FORGE® Composite shell for better impact resistance in extreme conditions.

- Ready to receive communication system.
- Operate all features with gloved hands.
- 2 shell sizes for better fit and comfort.
- Ratcheting quick-release chin strap.
- Recyclable helmet shell for minimal environmental impact.
- Aerodynamic shape to reduce neck fatigue.



ELECTRIC VISOR FOR OXYGEN HELMET

- 9290020000

Clear

ANTI-FOG SUN VISOR FOR OXYGEN HELMET

- 9290030057 Smoke
- 9290030092 Bronze
- 9290030095 Amber

One size

POWER CABLES KIT FOR OXYGEN HELMET

- 9290040090

Black

LED UTILITY LIGHT FOR OXYGEN HELMET

- 9290060090

NCS REMOVAL PADS FOR OXYGEN HELMET

- 9290230090

ENDURO EX-2 HELMET

- 664053_09 Grey
- 448555_94 Black

Sizes: XS - 2XL.

This hybrid helmet offers the sun shading, snow deflecting ability and snocross look helmet with the full-face protection of a visor for the best of both worlds. Great for adventure riding on or off trail.

- 80% Polycarbonate, 20% ABS.
- Advanced plastic composite shell.
- Lockable, multi-position and fog-free heated visor. Heated Visor Kit (860201283) sold separately.

- Interchangeable retractable sun visor.
- Removable aerodynamic peak.
- Ultra-comfortable and washable Dri-Lex+ lining.
- Oversized chin deflector.
- Adjustable air vents and exhausts.
- D.O.T. certified.
- Spare visor 4484720000



NEW
LYNX RADIEN GOGGLES 2.0

- 6691450090 Black
- 6691450084 Bright Blue
- 6691450006 Bright Red
- 6691450070 Green, Orange frame
- 6691450080 Blue, Orange frame

One size

Double cylindrical mirror or grey lens placed in a nano-frame. Additional cylindrical clear lens for low light conditions and goggle pouch included in the package.

- NEW! New Graphic design on the strap
- One piece lens concept: nose-guard integrated to the lens
- Innovative magnetic quickchange lens system
- 8 connection points, 16 magnets (placed in frame and lens)
- Wide field of view, both horizontal and vertical
- Anti-fog and anti-smudge coating



LYNX RADIEN GOGGLES 2.0 SPARE LENSES, ORANGE FRAME WITH NOSEGUARD

- 6691460000 Clear
- 6691460010 Yellow
- 6691460011 Gold
- 6691460057 Smoke
- 6691460006 Fire Mirror

LYNX RADIEN GOGGLES 2.0 SPARE LENSES, BLACK FRAME WITH NOSEGUARD

- 6691520000 Clear
- 6691520010 Yellow
- 6691520011 Gold
- 6691520057 Smoke
- 6691520006 Fire Mirror



LYNX RADIEN GOGGLES SPARE LENSES

- 6691420000 Clear
- 6691420010 Yellow
- 6691420022 Polarized silver
- 6691420030 Red
- 6691420090 Dark Grey
- 6691420011 Gold Mirror

Not illustrated



MODULAR 3 HELMET
447963_01 White **NEW**
447963_90 Black

Sizes: S - 3XL
Outstanding vision with crystal clear visor.
Quick-release chin strap.
Spacious design allows room for eyeglasses. DOT approved.
Shell: Polycarbonate Composite.

REPLACEMENT VISOR, FOR MODULAR 3 HELMETS

4478960000 Clear

Sun visor not included
Not illustrated

ELECTRIC VISOR, FOR MODULAR 3 HELMETS

4482390000 Clear

Not illustrated

SUN VISOR, FOR MODULAR 3 HELMETS

4459710057

One size
Not illustrated



ELECTRIC VISOR

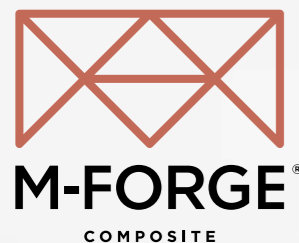
4484720000

One size

CORD SET

4478720090

Not illustrated



M-FORGE® COMPOSITE TECHNOLOGY DELIVERS HELMETS WITH SUPERIOR PERFORMANCE & LIGHTWEIGHT

SEE MORE PRODUCTS IN BRPPAC.COM

HOW TO MEASURE

SIZING CHART

MEN'S										
	XXS	XS	S	M	L	XL	2XL	3XL	4XL	5XL
Chest		84 - 89	89 - 94	94 - 102	102 - 112	112 - 122	122 - 132	132 - 142	142 - 150	150 - 160
Waist		69 - 74	74 - 79	79 - 86	86 - 97	97 - 107	107 - 117	117 - 127	127 - 135	135 - 158
Hips (Seat)		84 - 89	89 - 94	94 - 102	102 - 112	112 - 122	122 - 132	132 - 142	142 - 150	150 - 173
Arm Length		76 - 79	79 - 81	81 - 84	84 - 86	86 - 89	89	89 - 91	91	91
Inseam		79 - 81	81	81	81	81	81	81 - 83	83 - 84	84

LADIES'									
	XXS	XS	S	M	L	XL	2XL	3XL	
Chest		81 - 86	86 - 91	91 - 97	97 - 107	107 - 114	114 - 124	124 - 134	
Waist		61 - 66	66 - 71	71 - 76	76 - 86	86 - 94	94 - 104	104 - 114	
Hips (Seat)		86 - 91	91 - 97	97 - 102	102 - 112	112 - 119	119 - 132	132 - 140	
Arm Length		79	79 - 81	81	81 - 84	84	84 - 86	86	
Inseam		76	76	76	76	76	76	76	

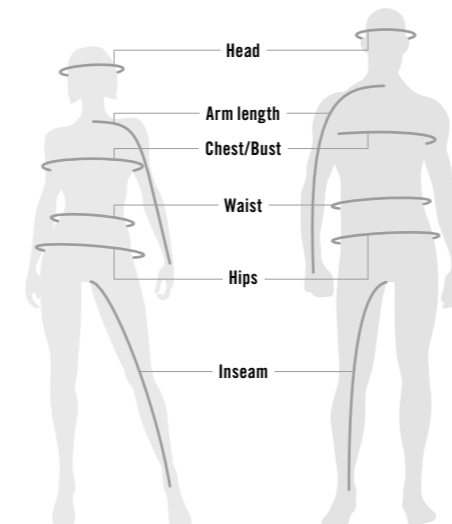
KIDS & TEEN											
	2	3	4	5	6	7	8	10	12	14	16
Height	0.92	1	1	1.16	1.24	1.28	1.37	1.46	1.56	1.58	1.68
Chest	53	56	58	61	64	66	69	72	76	80	84
Waist	51	52	53	55	56	57	58	61	64	66	69
Hips (Seat)	53	56	58	61	64	66	69	72	76	80	84
Arm Length	39	43	47	51	55	58	62	72	76	80	84
Inseam	34	39	44	50	53	58	62	67	71	75	79

HELMETS							
	XS	S	M	L	XL	2XL	3XL
Men & Ladies							
Hat Size	6 ⁵ / ₈ - 6 ³ / ₄	6 ⁷ / ₈ - 7	7 ¹ / ₈ - 7 ¹ / ₄	7 ³ / ₈ - 7 ¹ / ₂	7 ⁵ / ₈ - 7 ³ / ₄	7 ⁷ / ₈ - 8	8 ¹ / ₈ - 8 ¹ / ₄
Head (cm)	53 - 54	55 - 56	57 - 58	59 - 60	61 - 62	63 - 64	65 - 66
Junior		49 - 50	51 - 52	53 - 54			

GLOVES Measure Palm Width							
	XS	S	M	L	XL	2XL	3XL
Men							
cm	7 ¹ / ₂	8	9	10	11 ¹ / ₂	13	14
Ladies							
cm	6	7	8	9	10	11 ¹ / ₂	-

SOCKS					
Men		Ladies		Kids	
M	L	S	M	S/M	L/XL
6-9 ¹ / ₂	10-13	4-8	8 ¹ / ₂ -12	9 ¹ / ₂ -12 ¹ / ₂	13-3

BOOTS																				
	Men									Ladies					Kids					
	5	6	7	8	9	10	11	12	13	6	7	8	9	10	1	2	3	4	5	6
EU-Unisex Shoes Size	37	38	39.5	41	42	43	44.5	46	47	35.5	37	38	39.5	41	32	33	34	35.5	37	38
Foot (cm)	23	24	24.5	25.5	26.5	27	28	29	29.5	22	23	24	24.5	25.5	19.5	20.5	21.5	22	23	24



WHAT CODE REPRESENTS YOUR SIZE?

- 1 Find your size.
- 2 The corresponding code is THE CODE you use to complete the part number on your order.
Example: 440 227____90
Size: M = code "06", Therefore 440 227 06 90

SIZE	CODE	SIZE	CODE	SIZE	CODE
One Size	00	1	20	13	33
XXS	01	2	21	14	34
XS	02	3	22	16	35
S	04	4	23	3-4	79
M	06	5	24	5-6	52
L	09	6	25	6-8	48
XL	12	7	27	7-8	54
2XL	14	8	28	10-12	49
3XL	16	9	29	14-16	50
4XL	18	10	30	S/M	72
		11	31	M/L	91
		12	32	L/XL	73

BACKCOUNTRY ACCESS

THE MOST TRUSTED NAME
IN BACKCOUNTRY SAFETY



29 BACK COUNTRY ACCESSORIES

PROPER GEAR FOR
BACKCOUNTRY RIDING

CHECKLIST

- ✓ Snow Gear
- ✓ Backpack
- ✓ Airbag
- ✓ Radio
- ✓ Beacon
- ✓ Shovel
- ✓ Probe



NEW
LYNX BCA STASH 30 BACKPACK
6691540090 Black **NEW**
6691540035 Crimson-Burgundi **NEW**
6691350090 Orange

New style in 2 colors!
Lynx BCA Stash backpack is technical and rugged. Stash backpack includes freeze proof Stash hydration sleeve and is compatible with BC Link™ group communication system



LYNX BCA FLOAT 25 TURBO AIRBAG
6691300090

The Float avalanche airbag system is designed to keep you on the surface during an avalanche. It is the most proactive snow safety tool you can carry into avalanche terrain.



LYNX BCA T3 TRANSCEIVER
6691320090

Designed to be "pocket friendly," T3 is the choice of guides, mountaineers, and the weight-conscious crowd. All transceivers include harness and batteries.



LYNX BCA FLOAT 2.0 CYLINDER
6691310080

Refillable air cylinder to BCA Float 25 Turbo Backbag.



LYNX BCA STEALTH 270 PROBE
6691340012

Lynx BCA probe features depth-markings that are easy to see when you're performing a rescue or logging a snow profile.



LYNX BCA D2 EXT SHOVEL WITH SAW
6691410009

Folding saw includes high strength polymer handle and 420 Stainless Steel taper-ground, razor teeth blade.



LYNX BCA BC LINK EU RADIO
6691360009

Maximize your line-and your safety. Work through complex terrain as a team with our two-way radios optimized for winter



LYNX BCA RADIO BATTERY
6691370090

Spare battery to Lynx BCA BC Link EU Radio.

SEE MORE PRODUCTS IN BRPPAC.COM

SEE MORE PRODUCTS IN BRPPAC.COM

ACCESSORIES

A WEEK OF ADVENTURES IN THE FREEZING WILDERNESS, OR A DAY'S RIDE TO A LEAN-TO ON A NEARBY FELL ON CRISP SPRING SNOW?

LYNX SNOWMOBILE ACCESSORIES AND RIDING GEAR WILL ENSURE THE PERFECT WINTER ADVENTURE FOR YOU AND YOUR VEHICLE.



LinQ is a sturdy attachment system for accessories. It makes accessories quick and easy to attach and detach and transforms your snowmobile to fit your needs in seconds.

QUICK: Plug in your accessories in seconds.

EASY: No tools required.

RELIABLE: Integrated locking mechanism.

UNIQUE: Specially designed for BRP products.

SNOWMOBILE MODELS & PLATFORMS 2021-2018

2021

RADIEN

Xterrain 3700 600 EFI
 Xterrain 3700 600R E-TEC
 Xterrain 3900 600R E-TEC
 Xterrain PRO 3900 600R E-TEC
 Xterrain PRO 3900 850 E-TEC
 Xterrain RE 3700 850 E-TEC
 Xterrain RE 3900 850 E-TEC
 BoonDocker 3900 600R E-TEC
 BoonDocker RE 3700 850 E-TEC
 BoonDocker RE 3900 850 E-TEC
 BoonDocker DS 3900 850 E-TEC
 BoonDocker DS 4100 850 E-TEC
 Rave RE 600R E-TEC
 Rave RE 850 E-TEC
 Rave Enduro 600R E-TEC

RADIEN-X (400 MM)

49 Ranger 600 ACE
 49 Ranger PRO 600R E-TEC
 49 Ranger PRO 900 ACE
 49 Ranger ST 900 ACE
 Xterrain RE 3700 900 ACE Turbo
 Xtrim 600 ACE
 Xtrim LX 600 ACE
 Xtrim SC 900 ACE

RADIEN-X (500 MM)

Commander 600R E-TEC
 Commander 900 ACE
 Commander 900 ACE Turbo
 Commander Limited 600R E-TEC
 Commander Limited 900 ACE
 Commander Limited 900 ACE Turbo
 Commander Grand Tourer 900 ACE
 Commander Grand Tourer 900 ACE Turbo
 Xterrain Brutal 850 E-TEC
 59 Ranger 600 ACE
 59 Ranger 600 EFI

RADIEN-X (600 MM)

69 Ranger 900 ACE
 69 Ranger SnowCruiser 900 ACE
 69 Ranger Alpine 900 ACE Turbo

2020

RADIEN-X (400 MM)

49 Ranger 600 ACE
 49 Ranger PRO 600R E-TEC
 49 Ranger PRO 900 ACE
 49 Ranger ST 900 ACE
 Xterrain RE 3700 900 ACE Turbo
 Xtrim 600 ACE
 Xtrim LX 600 ACE
 Xtrim SC 900 ACE

RADIEN-X (500 MM)

Commander 600R E-TEC
 Commander 900 ACE
 Commander 900 ACE Turbo
 Commander Limited 600R E-TEC
 Commander Limited 900 ACE
 Commander Grand Tourer 900 ACE
 Commander Grand Tourer 900 ACE Turbo

RADIEN

Xterrain 3700 600R E-TEC
 Xterrain 3900 600R E-TEC
 Xterrain RE 3700 600R E-TEC
 Xterrain RE 3700 850 E-TEC
 Xterrain RE 3900 600R E-TEC
 Xterrain RE 3900 850 E-TEC
 BoonDocker 3900 600R E-TEC
 BoonDocker RE 3700 850 E-TEC
 BoonDocker RE 3900 850 E-TEC
 BoonDocker DS 3900 850 E-TEC
 BoonDocker DS 4100 850 E-TEC
 Xtrim RE 850 E-TEC
 Rave RE 600R E-TEC
 Rave RE 850 E-TEC
 Rave Enduro 600R E-TEC

XU

69 Ranger 900 ACE
 69 Ranger SnowCruiser 900 ACE
 69 Ranger Alpine 1200 4-TEC
 59 YETI 600 ACE

2019

RADIEN-X

49 Ranger PRO 600R E-TEC
 49 Ranger PRO 900 ACE
 49 Ranger ST 900 ACE
 Xtrim SC 900 ACE

RADIEN

Xterrain 3700 600R E-TEC
 Xterrain 3900 600R E-TEC
 Xterrain RE 3700 850 E-TEC
 Xterrain RE 3900 850 E-TEC
 BoonDocker RE 3700 850 E-TEC
 BoonDocker RE 3900 850 E-TEC
 BoonDocker DS 3900 850 E-TEC
 BoonDocker DS 4100 850 E-TEC
 Xtrim RE 850 E-TEC
 Rave RE 600R E-TEC
 Rave RE 850 E-TEC

REX²

Xtrim 600 ACE
 49 Ranger 600 ACE
 Adventure LX 600 ACE

XU

Commander 900 ACE
 Commander 600 E-TEC
 Commander Limited 900 ACE
 Commander Limited 600 E-TEC
 Commander 800R E-TEC
 Commander Grand Tourer 900 ACE
 Commander Grand Tourer 900 ACE
 Commander Grand Tourer 1200 4-TEC
 69 Ranger 900 ACE
 69 Ranger SnowCruiser
 69 Ranger Alpine 1200 4-TEC
 59 YETI 600 ACE

2018

RADIEN

Rave RE 850 E-TEC
 Xtrim RE 850 E-TEC
 BoonDocker RE 3700 850 E-TEC
 BoonDocker DS 3900 850 E-TEC
 BoonDocker DS 4100 850 E-TEC

REX²

Rave RE 600 E-TEC
 Rave RS 600 E-TEC
 Xtrim 600 ACE
 Xtrim SC 600 E-TEC
 Xtrim SC 900 ACE
 Xtrim RE 600 E-TEC
 BoonDocker 3700 600 E-TEC
 BoonDocker 3900 600 E-TEC
 49 Ranger 600 E-TEC
 49 Ranger 600 ACE
 49 Ranger ST 900 ACE
 Adventure LX 600 ACE

XU

Commander 600 E-TEC
 Commander 900 ACE
 Commander 5900 50th Anniversary 900 ACE
 Commander LTD 600 E-TEC
 Commander 800R E-TEC
 Commander Touratech 800R E-TEC
 Commander Grand Tourer 900 ACE
 Commander Grand Tourer 1200 4-TEC
 69 Ranger 900 ACE
 69 Ranger Army LTD 800R E-TEC
 69 Ranger Alpine 1200 4-TEC
 59 YETI 600 ACE
 69 YETI Army 600 E-TEC



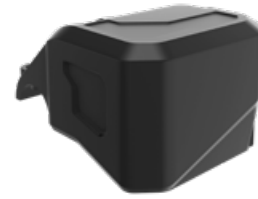
RADIEN
BoonDocker RE 3700

RADIEN-X (400 mm)
Xtrim SC

RADIEN-X (500 mm)
Xterrain Brutal

RADIEN-X (600 mm)
69 Ranger

SKID PLATES, PROTECTORS & REINFORCEMENT



NEW

BRAKE RESERVOIR PROTECTOR

860202171

Increases impact protection for the brake reservoir. Window to see fluid level. Cast aluminum construction.

RADIEN / RADIEN-X



NEW

SKID PLATE

860202176

Injection molded plate with smooth bottom surface to reduce drag. Wide shape for full protection and maximum flotation. Attachment kit included.

RADIEN-X 600 MM



HEAVY-DUTY SKID PLATE

860202064 • Viper Red **NEW**
860202065 • Race Orange **NEW**
860201866 • Black
860201867 • White

Full coverage skid plate. Maximum extra wide protection for tough conditions. Injection molded assures a perfect fit and easy installation. Attachment kit included.

RADIEN-X 400 MM



HEAVY DUTY SKID PLATE

860202095 • Black

RADIEN-X 500 MM



EXTREME SKID PLATE

860202021 • Cyan **NEW**
860202022 • Race Orange **NEW**
860201669 • Manta Green
860201668 • Sunburst Yellow
860201586 • Black
860201663 • Red
860201664 • White

Injection molded plate with smooth bottom surface to reduce drag. 4mm thick high impact resistance polypropylene for durability. Relieved A-arms that reduce chance of snow buildup. Attachment kit included.

RADIEN



FULLBODY SKIDPLATE

860202023 • Cyan **NEW**
860202024 • Race Orange **NEW**
860201647 • Manta Green
860201646 • Sunburst Yellow
860201631 • Black
860201641 • Red
860201642 • White

Injection molded plate with smooth bottom surface to reduce drag. 4mm thick high impact resistance polypropylene for durability. Wide shape for full protection and maximum flotation. Attachment kit included.

RADIEN



RAIL REINFORCEMENT

860201870

Fits all Radien models, except models with PPS² DS+ rear suspension.

RADIEN



REAR SKIDPLATE

860202010 • Extra underbelly protection

Protects components such as brakes and gearbox from impacts. Available for models with extreme skid plate and long chaincase.

RADIEN



REAR SKIDPLATE

860202067 • Extra underbelly protection.

Protects components such as brakes and gearbox from impacts. Available for models with fullbody skid plate and long chaincase.

RADIEN



LINQ REMOVABLE SNOWFLAP

860201515

Innovative way to remove snowflap. Can be installed with stock flap. Stows on the tunnel when not in use. Does not fit on BoonDocker DS and Xterrain RE.

RADIEN



SKID PLATE

860201342 • Black. For 59 YETI 2016 models and up

860201343 • Black. For 69 YETI 2016 models and up

XU



SKID PLATE

860200552 • White
860200549 • Black

Provides additional underbelly protection in off trail conditions. Helps glide on snow and prevents snow from sticking to the frame. Also suitable for A-arms with protectors. Does not fit on 59 and 69 YETI.

XU



HD GEARBOX AND BRAKE DISK PROTECTOR KIT

860201361 • Only available for A-arm models

XU

TOWING

NEW

WINCH KIT

860202097

Ergonomic clutch handle. Rugged all-steel gears and bushings, provides more torque and longer life. Automatic 100% load-holding brake. Sealed solenoid for all weather protection. Corded 10 ft. (3m) weather sealed hand-held remote. Pulling strength capability

of 2,000 lb (907 kg). Synthetic rope. One-piece rope guide. EC Compliant.

RADIEN-X 500 MM
RADIEN-X 600 MM



TOW HITCH

860202116 • Available for models with a heavy-duty bumper.

860202117 • Available for models with a Explorer rear bumper.

Does not fit for 2018-2021 BoonDocker DS models.

REX / REX² / RADIEN / RADIEN-X

WIND PROTECTION & MIRRORS



ADJUSTABLE WINDSHIELD HIGH TO EXTRA HIGH
860201782

59 cm - 69 cm. Requires also 517306183 Support kit and Side deflectors 860201910.
RADIEN / RADIEN-X



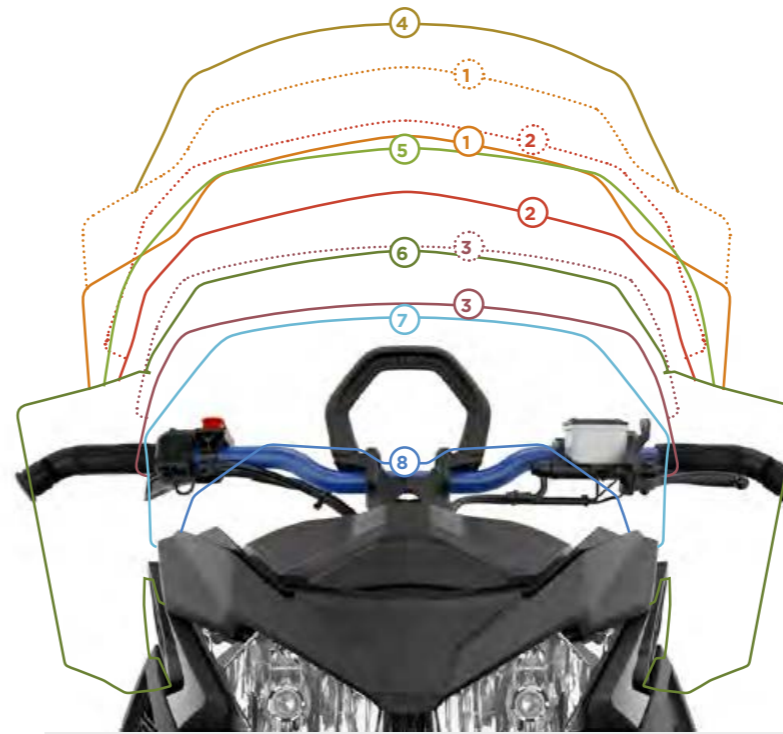
ADJUSTABLE WINDSHIELD LOW TO MEDIUM
860201820

Quickly change your level of wind protection with the flip of a lever. Compatible with Glove Box Extension (860201523). Side Deflectors and Windshield Support not included. Adjustable range of 35.6 cm to 43.2 cm.
RADIEN / RADIEN-X



ADJUSTABLE WINDSHIELD MEDIUM TO HIGH
860201493

48,5 - 58,5 cm high. Requires also 517306183 Support kit and Side deflectors 860201910.
RADIEN / RADIEN-X



EASILY CHOOSE YOUR IDEAL WINDSHIELD

ADJUSTABLE WINDSHIELDS	Lowest Position	Highest Position
① HIGH TO EXTRA HIGH	58.5 cm	63.5 cm
② MEDIUM TO HIGH	48.5 cm	58.5 cm
③ LOW TO MEDIUM	37 cm	43 cm

WINDSHIELDS	Height
④ ULTRA HIGH	27.5" (70 cm)
⑤ HIGH	23" (58.5 cm)
⑥ MEDIUM	17" (43 cm)
⑦ LOW	14" (36 cm)
⑧ ULTRA LOW	8" (20 cm)



WINDSHIELD, ULTRA LOW
860201259

20 cm high.
RADIEN / RADIEN-X



WINDSHIELD, LOW
860202262

36 cm high. Includes windshield support.
RADIEN / RADIEN-X



WINDSHIELD, MEDIUM
860201547

43 cm high. Includes windshield support.
RADIEN / RADIEN-X



WINDSHIELD, MEDIUM
860201864

43 cm high. With side deflectors and windshield support kit.
RADIEN / RADIEN-X



WINDSHIELD, EXTRA HIGH
860202257

63,5 cm high. With side deflectors and windshield support kit.
RADIEN / RADIEN-X



WINDSHIELD, EXTRA HIGH
860201000

62,9 cm. Standard in Commander (not in 800R and Touratech), 69 Ranger and Yeti models.
XU



WINDSHIELD SUPPORT
517307205 • Manta Green
517307206 • Lava Red
517306183 • Black

For medium and higher windshields
RADIEN / RADIEN-X



WINDSHIELD SIDE DEFLECTORS
860201910

Increases wind deflection for windshields.
RADIEN / RADIEN-X

NEW

MIRROR KIT
517306490



MIRROR KIT
619400009

Sold individually.



MIRROR KIT, ROUND
517305787

XU



FLEXIBLE MOUNTAIN HANDGUARDS
860201591 • Black

Designed to withstand roll overs and tough boondocking conditions
RADIEN / RADIEN-X / REX / REX²



HANDLEBAR AIR DEFLECTORS
860201383

Black (transparent)
RADIEN / RADIEN-X / REX / REX²



HANDLEBAR MUFFS
619590211

RADIEN / REX / REX² / XU



PASSENGER MUFFS FOR 1 + 1 SEAT
860202114

• Ultra warm passenger muffs with fleece liner.
• Designed for extreme cold conditions.
• Easy to remove in warmer weather.
• Inner skeleton allows muff to keep its shape and gives more space for hand movement. Fits also LinQ 2-up seat (860201863).
RADIEN-X 500 MM



AIR DEFLECTOR EXTENSION KIT
860200781

Fit with handlebar air deflectors 860201383
RADIEN / REX / REX²



HANDLEBAR PAD
860201680

RADIEN

BUMPERS



XC FRONT BUMPER

860201615 • Black

Add extra protection and attitude with this bumper.

RADIEN / RADIEN-X 400 MM



FRONT BUMPER

860201858 • Viper Red
860201859 • Race Orange
860201444 • Black
860201445 • White

Easy-install bumper changes the appearance of your sled in minutes

RADIEN / RADIEN-X 400 MM



ADVENTURE FRONT BUMPER

860202135 • Sunburst Yellow/Black NEW
860201787 • Race Orange/Black
860201788 • Viper Red/Black
860201681 • Black/Black
860201474 • White/Black

RADIEN / RADIEN-X 400 MM



ADVENTURE REAR BUMPER

860201683 • Black.
860201684 • Orange / Black.
For Xtrim RE and Rave RE models (2020 ->)

860201685 • Black.
For Rave RE (until 2019) and Rave Enduro.

Matches the Adventure Front Bumper.

RADIEN

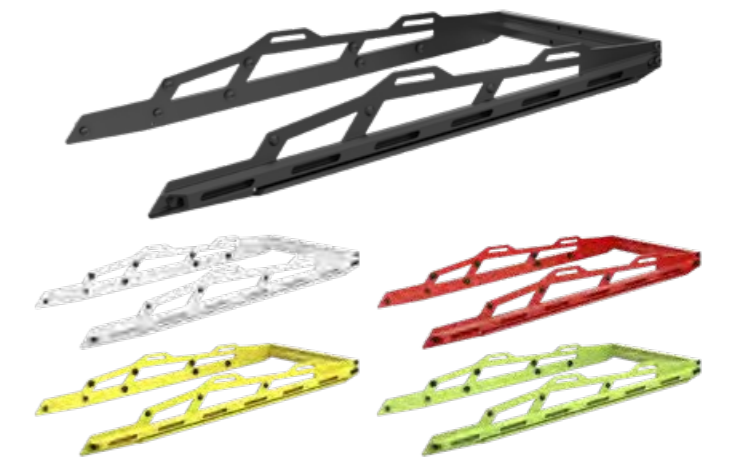


EXPLORER FRONT BUMPER

860201912 • Black
860201949 • White
860201957 • Viper Red
860201958 • Race Orange
860201959 • Sunburst yellow
860201960 • Manta Green

The Explorer front bumper gives the snowmobile additional protection and gives the front of the vehicle an attacking expression.

RADIEN / RADIEN-X 400 MM



EXPLORER REAR BUMPER

860201950 • 3700 • White
860201952 • 3700 • Black
860201954 • 3700 • Viper Red
860202007 • 3700 • Manta Green
860202099 • 3700 • Sunburst Yellow

The Explorer rear bumper protects the rear part of the tunnel and has multiple attachment points, making it easy to attach cargo to the tunnel.

RADIEN / RADIEN-X 400 MM



NEW

FRONT BUMPER, BLACK

860202120 • 500 mm & 600 mm
860202254 • 400 mm

Add extra protection and attitude with this front bumper.

RADIEN-X



NEW

SIDE BUMPER

860202189 • Black
860202228 • Orange

Protects side panels while still allowing access to them. Need also front bumper 860202120.

RADIEN-X 600 MM



NEW

SIDE BUMPER

860202190 • Black

Protects side panels while still allowing access to them. Need also front bumper 860202120.

RADIEN-X 500 MM



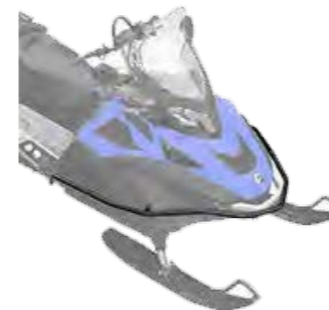
NEW

SIDE BUMPER

860202255 • Black

Protects side panels while still allowing access to them. Need also front bumper 860202254.

RADIEN-X 400 MM



EXTRA BUMPER

860200391

Only available for the 59 YETI (69 YETI needs also the shim kit 860201158)

XU



EXTRA BUMPER

860200537

Not suitable for the 59 and 69 YETI.

XU

860201951 • 3900 • White
860201953 • 3900 • Black
860201955 • 3900 • Viper Red
860202008 • 3900 • Manta Green
860202100 • 3900 • Sunburst Yellow

HITCH BUMPER

860201424 • For BoonDocker RE 3900 and Xterrain RE 3900

860201250 • For BoonDocker RE 3700

860201433 • For Rave RE (until 2019)



860201471 • For Xtrim RE and Rave RE (2020->)

Required for hitch use

RADIEN

SKIS



BLADE DS+ SKIS

860202265 • Cyan NEW
860202011 • Black
860202012 • White
860202013 • Viper Red
860202015 • Sunburst Yellow
860202016 • Manta Green
860202017 • True Blue
860202019 • Race Orange

The Blade DS+ ski improves the handling of the Lynx snowmobiles in deep snow. The long, redesigned ski makes the snowmobile more predictable to steer, even when turning in deep snow, and it improves handling when side hilling.

RADIEN / RADIEN-X / REX²

BLADE XC SKIS

860201655 • Black
860201656 • Sunburst Yellow
860201657 • Blue
860201658 • Lime Green
860201659 • Manta Green
860201660 • Red
860201661 • White
860201662 • Grey
860201946 • Race Orange

It is the perfect combination of flotation in deep snow and sharp steering on hard packed snow. Sold in pairs.

RADIEN / RADIEN-X / REX / REX² / XU

BLADE SKI HANDLE

505072976 • Black
505073107 • Yellow
505073108 • White
505073388 • Lava Red
505073513 • Orange
505073651 • Race Orange
505073665 • Sunburst Yellow
505073109 • Viper Red

RADIEN / RADIEN-X / REX / REX² / XU



BLADE DS+ CARBIDE RUNNER

860201044

SUSPENSION



FOX FLOAT SHOCK GUARDS
860201011

Protection for Fox Float III shocks. Sold in pairs with mounting hardware.

RADIEN



FOX FLOAT 3 SHOCKS
860201278

New calibration, specifically for BoonDocker DS models. Sold in pairs.

RADIEN



FRONT SHOCKS - 1.5 ZERO QS3-R
860201710

Quick switch 3 positions (QS3). Genuine Kashima coat. Ski stance: 36".

RADIEN



FRONT SHOCKS - FLOAT 3 EVOL QS3-R
860201713

Quick switch 3 positions (QS3). Genuine Kashima coat. Ski stance: 36".

RADIEN



FRONT SUSPENSION LFS KIT
860201588

Adjustable width 975 mm - 1,019 mm. Includes KYB 36R shocks and springs.

RADIEN



CURVED A-ARMS
860201679

Redesigned to be more effective. Provides more clearance for less drag in deep snow. Reduces damage from objects hidden below the snow. Quick-disconnect sway bar kit included. 921 mm.

RADIEN / RADIEN-X

EASYRIDE REAR END LOCKING PIN

860201948 • Radien-X 500 mm
860202068 • Radien-X 400 mm

The simple mechanism makes it easy to lock and unlock the Easyride rear end movement for different application needs.

**RADIEN-X 400 MM
RADIEN-X 500 MM**

STORAGE



NEW

CELL PHONE HOLDER
860202072

Doubles the storage with additional 4 liter capacity. Can be used with or without windshield. Does not include cell phone. Available also the replaceent door for glovebox, 860202169, sold separately.

RADIEN / RADIEN-X



NEW

LINQ COMBO BAG
860201939

Replaces passenger seat in seconds for additional storage. Allows access to storage underneath. Water resistant. 52L capacity. Works with 135L LinQ Utility Cargo Box (860202085).

RADIEN-X 500 MM
RADIEN-X 600 MM



NEW

LINQ DEEP SNOW PRO BAG
860201985

Watertight (with TiZip). Our highest level of waterproofing. Lightweight. Includes one set of LinQ fasteners. Fits position 1, 2 and on top of Fuel Caddy.

RADIEN



NEW

REAR CARGO BOX 70 L
860202175

70-liter capacity. Provides additional secure storage. Injection molded plastic. Optional LinQ mounts can be added on top for even more capacity. Convenient flip top provides easy access to stored goods. Standard on Commander Limited models.

RADIEN-X 500 MM
RADIEN-X 600 MM



NEW

SEAT BOX FOR DEEP SNOW SEAT
860202028

Low profile integrated storage box utilizing the battery area. Added storage capacity of 1.5 L with battery and 6 L for a vehicle without the battery. Same height as battery cover.

RADIEN



THERMAL BOX
219400964

16 liter. High quality foam insulation for optimal performance hot or cold. Does not fit with 1+1 Backrest.

RADIEN / RADIEN-X



LINQ UTILITY CARGO BOX
860202085

- Massive 135-liter capacity.
- Rugged and tough rotomolded plastic construction.
- 4 LinQ anchors can be added on top of the box for additional storage.
- 4 fixation hook points to secure cargo in the box and 4 molded handles features for ease of transportation.

- Slots molded in for plywood dividers.
- Integrated saw and axe holders.
- Removable/lockable lid.
- Dedicated hooks for bungee cords or elastic net to expand storage capacity on top of the box.

RADIEN-X 500 MM



LINQ CARGO BOX, LARGE
860201196

Volume 40 L. Only available for 3700 mm+ models.

RADIEN / RADIEN-X / REX / REX²



HANDLEBAR BAG
860201565

2.3 liter capacity. Fits Radien models without strap.

RADIEN / RADIEN-X



LINQ CARGO BOX
860201634 • Black

Can be used on all Radien & Radien X sleds. Optional LinQ mounts can be added on top for even more capacity.

RADIEN / RADIEN-X



LINQ CARGO BOX BAG
860201635 • Black

Fits perfectly in the LinQ Cargo Box (860201634.) Easy to take everything with you on arrival.

RADIEN / RADIEN-X



LARGE LINQ TUNNEL BAG 21 L
860201273

Can be installed on top of Stackable Fuel caddy or behind seat. LinQ Cargo Base Kit included.

RADIEN / RADIEN-X



LINQ TOOL BOX
715004301

19 L capacity.

RADIEN / RADIEN-X / REX / REX²



137" TUNNEL BAG ADVENTURE
860201272

40-liter capacity.

RADIEN / RADIEN-X



LINQ SLIM WATERPROOF TUNNEL BAG - 26 L
860202058

Rigid bottom and top design. Allows storage of removable snow flap. Waterproof inner roll top. Shovel can be stored while assembled on top of the bag. 16 to 26 liter capacity. LinQ Cargo Base Kit (860201806) included. Now fits in position 1 & 2 and 2 & 3. 137" and longer

RADIEN / RADIEN-X



LINQ CARGO BOX
860201739

110 L capacity. Fits 3700 and up.

RADIEN / RADIEN-X / REX / REX²



LINQ SPORT BAG
860201678

17 L capacity.

RADIEN / RADIEN-X / REX / REX²



HANDLEBAR BAG, SMALL
860200920 • Small, volume 3 L

RADIEN / RADIEN-X / REX / REX² / XU



EXTRA LARGE XU BAG
860201179 • Black

Extra large 150 L bag shaped to fit utility model racks.

XU



CARGO BOX
619560023
511000730 Railing
511000729 Lock

75 liter capacity.
XU

42 STORAGE



LINQ JERRY CAN
860201264

Volume 15 L. REX² models require also LinQ Shim Kit 860201432.

RADIEN / RADIEN-X / REX²



LINQ JERRY CAN
860200733

Volume 11 L.
REX / REX² / XU



LINQ JERRY CAN
860201774 • 3.78 Liter capacity.

Smaller size for less weight. Can be used in position 1 or 2. Easy pour design for sleds or powertools.

RADIEN / RADIEN-X



OIL CADDY FOR STACKABLE JERRY CAN
860201621

3.78 liter.
RADIEN / RADIEN-X



LINQ REAR CARGO RACK
860201800

Replaces passenger seat for extra cargo capacity. Simple attachment. Retains underseat access with clever hinge system. Allows use of more LinQ accessories.

RADIEN-X 500 MM



LINQ CARGO RACK
860201003

Cargo rack for LinQ bags and jerry can. Requires also LinQ Cargo Base (860201806) and LinQ Adaptor Plate (860200945).

XU



CARGO RACK RISER KIT
619400064

Not suitable for the 69 YETI.
XU



GLOVEBOX EXTENSION
860201523

4-liter capacity.
RADIEN / RADIEN-X



GLOVEBOX LINER
860201270

RADIEN / RADIEN-X

43 STORAGE



CHAIN SAW HOLDER
860202071

Securely mounts to rear of vehicle. Easy on/off and installation. Retains full function of LinQ accessories, including cargo box

RADIEN-X 500 MM



LINQ AXE HOLDER
860201854

Securely mounts on either sides of the tunnel using LinQ anchors. Universal sizing to fit a wide variety of axes.

RADIEN-X 500 MM



LINQ ICE AUGER HOLDER
860201828

Securely mounts to right side of vehicle. Easy on/off and installation. Retains full function of LinQ accessories. Handles augers with up to 10" blades.

RADIEN-X 500 MM



LYNX SHOVEL WITH SAW
860201918

RADIEN / RADIEN-X / REX² / XU

SHOVEL HOLDER BRACKET

860201979 all models with flat mounting surface
860202287 Radien-X models with rear rack

Securely mounts on side of the tunnel.

RADIEN-X 500 MM



LINQ TOOL HOLDER
860201846

Designed for universal applications. Convenient swivel latch allows tools like a shovel to be stored in multiple positions. Designed specifically for winter use. Sold in pairs.

RADIEN-X 500 MM



LINQ ANCHORS RETRO FIT KIT
860201812

Revised hardware to fit MultiMount Plate.

RADIEN-X 500 MM



LINQ QUICK ATTACHMENT KIT
860201806

RADIEN / RADIEN-X / REX / REX²



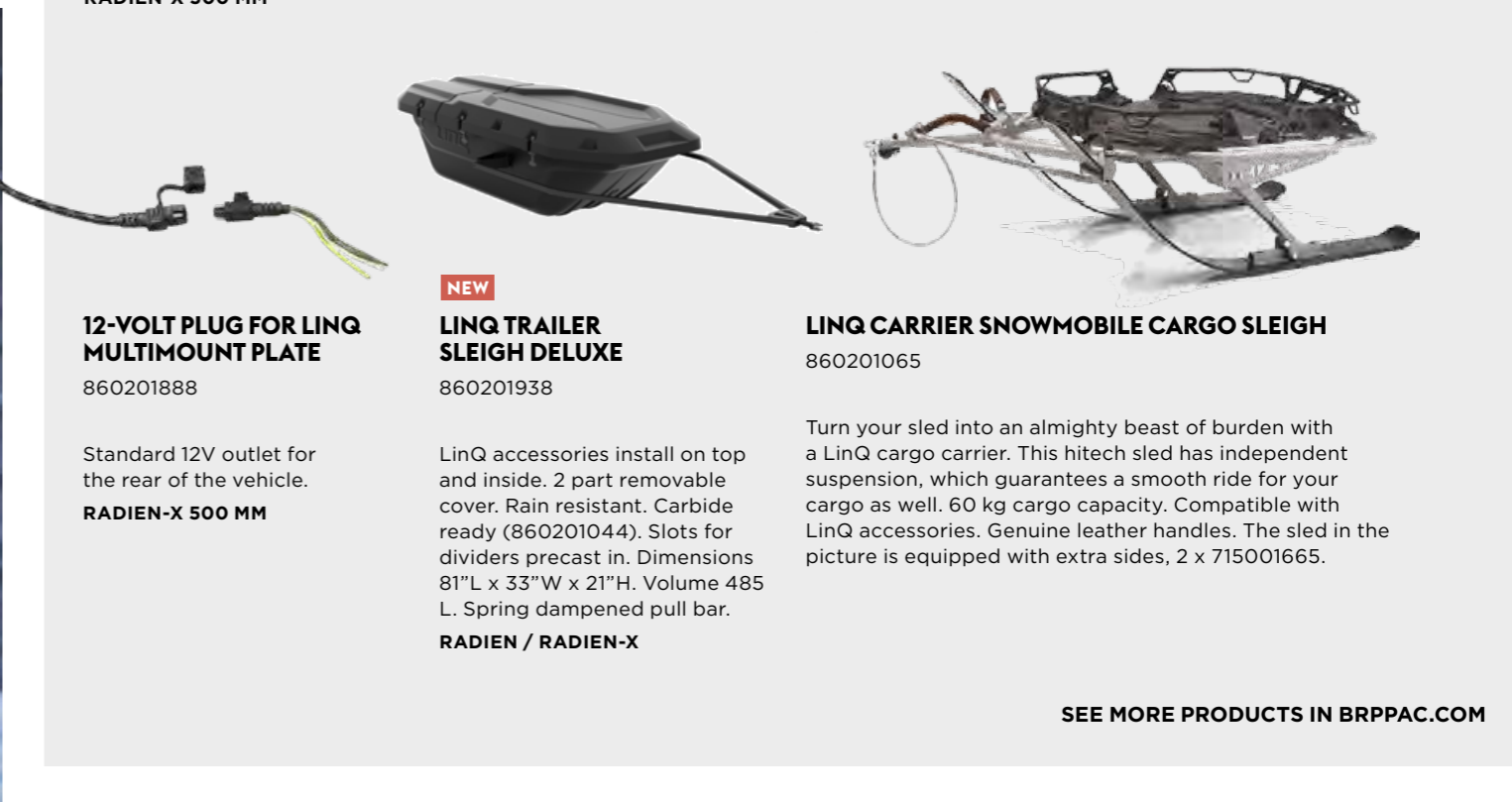
LINQ ADAPTOR PLATE
860200945

Requires also LinQ Cargo Base (860201806) to attach LinQ cargo Rack (860201003).

XU



SEE MORE PRODUCTS IN BRPPAC.COM



12-VOLT PLUG FOR LINQ MULTIMOUNT PLATE
860201888

Standard 12V outlet for the rear of the vehicle.
RADIEN-X 500 MM



NEW
LINQ TRAILER SLEIGH DELUXE
860201938

LinQ accessories install on top and inside. 2 part removable cover. Rain resistant. Carbide ready (860201044). Slots for dividers precast in. Dimensions 81"L x 33"W x 21"H. Volume 485 L. Spring dampened pull bar.

RADIEN / RADIEN-X



LINQ CARRIER SNOWMOBILE CARGO SLEIGH
860201065

Turn your sled into an almighty beast of burden with a LinQ cargo carrier. This hitech sled has independent suspension, which guarantees a smooth ride for your cargo as well. 60 kg cargo capacity. Compatible with LinQ accessories. Genuine leather handles. The sled in the picture is equipped with extra sides, 2 x 715001665.

SEE MORE PRODUCTS IN BRPPAC.COM

ERGONOMY

NEW

RS HOOD KIT
860202244

Lightweight hood (only for Racing purposes). Polypropylene construction.

RADIEN



HANDLEBAR GRIPS
860201878 • Black

2 pieces.

RADIEN / RADIEN-X



GRAB HANDLE LOW
860202073

- Provides more freedom of movement in active riding.
- Not compatible with Handlebar Bag (860201565).

RADIEN / RADIEN-X

FIXED RISER BLOCK
860201874

90 mm

RADIEN / RADIEN-X



SIDE SUPPORT FOOT KIT
860201876

RADIEN

ADJUSTABLE RISER
860201589 • 150-210 mm.
For straight handlebars.
Fits on BoonDockers models.

860201590 • 125-160 mm.
For straight handlebars.
Fits on Rave RE and Xtrim RE models.

RADIEN



FIXED TOE HOLD
860201875

For 3500 and up.

RADIEN

EXTENSION KIT
860201428 • 190 mm.
For Straight Handlebar. Works with all stock wiring and cables.
Fits on BoonDockers models

860201393 • 165 mm.
For Straight Handlebar. Cable included. Fits on Rave RE and Xtrim RE models

860201427 • 120 mm.
For Straight Handlebar. Works with all stock wiring and cables. Fits on Rave RE and Xtrim RE models

RADIEN

RIDERS FOOT RAMP
860201877

Not for Rave RE.

RADIEN



1+1 SEATS & ACCESSORIES



NEW

DEEP SNOW PRO SEAT
860202264

Provides greater freedom of movement. Low, narrow and light seat. Integrated grip areas.

RADIEN
RADIEN-X 400 MM



NEW

HEATED DRIVER SEAT
860202261

Adds warmth in the coldest conditions.

RADIEN-X 500 MM
RADIEN-X 600 MM



1 + 1 SEAT WITH BACKREST
860202093

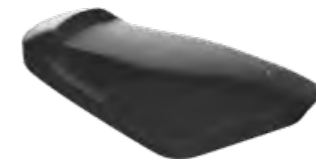
RADIEN-X 500 MM



BATTERY COVER
860201720

Use in conjunction with 2 up light seat 860201862 and 1 + 1 Seat with backrest 860201863.

RADIEN / RADIEN-X 400 MM



2 UP LIGHT SEAT
860201862

Requires 860201720 battery cover.
RADIEN / RADIEN-X 400 MM

HEATED GRIPS FOR LING 2 UP SEAT
860201840

• Allow your passenger to ride in comfort in all conditions.

• Easy unplug.

RADIEN / RADIEN-X 400 MM



2 UP SEAT WITH BACKREST
860201863

Requires 860201720 battery cover.
RADIEN / RADIEN-X 400 MM



NEW

HEATED PASSENGER SEAT AND GRIPS
860202094

Premium passenger seat with backrest and heated grips. Adds warmth in the coldest conditions.

RADIEN-X 500 MM
RADIEN-X 600 MM



1 + 1 LUXUS SEAT
619400068

XU

1 + 1 SEAT ELECTRIC VISOR / HEATED BOOTS WIRE HARNESS
860201981

- Works in conjunction with the new 1 + 1 heated grips (860201840).
- Provides 2 extra connections: one connection for electric visor and one connection for heated boots.

RADIEN / RADIEN-X

46 ELECTRICAL



NEW
E-LINQ
860202131

Combines both DESS cord and heated shield cord into one. Same type of magnetic connector as used on OXYGEN helmet. Easily converts standard DESS cord into a powered cord. Increases freedom of movement. Easy and quick connection that self locates. Works with any 12V heated shield.

RADIEN / RADIEN-X



AMBIENT AIR & ENGINE TEMPERATURE MODULE
860201362

RADIEN

MONTANA GPS SUPPORT
860201029

Radien models need adapter 515178980.

RADIEN / REX²



GARMIN ZUMO 590LM GPS
860201556

Handlebar mounting 619590259.
RADIEN / RADIEN-X



GARMIN MONTANA 680T GPS KIT
860201417

REX / REX² / XU



UNIVERSAL GPS MOUNT
860201018

XU



LINQ WORKING LIGHT
860201849

Convenient LinQ mount with swivel allows you to adjust as needed. Ultra bright 1000 Lumen output. Works when at idle. Requires 12V outlet (860201888).

RADIEN-X



HIGH BEAM AUXILIARY LED LIGHT
860201956

RADIEN / RADIEN-X



HEATED VISOR KIT
860201283

Wiring harness included.
RADIEN / RADIEN-X



HEATED VISOR KIT
860201234 • front
619590074 • rear for passenger

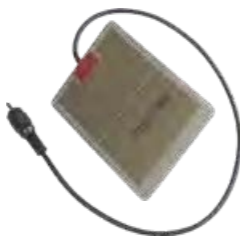
REX / REX² / XU



BLOCK HEATER
860201980

Improves starting in extreme cold temperatures. Fits only models with 600 ACE (2020->) 900 ACE and 900 ACE Turbo engines. Installation tool required (520002260, sold separately).

RADIEN-X



ENGINE HEATER KIT
860200367

Available for the 600 ACE, the 900 ACE and the 1200 4-TEC.
REX / REX² / XU



RCA ADAPTOR PLUG KIT
515176794

Y plug power splitter lets you connect 2 heating components or 1 heater and 1 electrical visor.
RADIEN / RADIEN-X / REX² / XU

47 ELECTRICAL



LEARNING KEY
860201872

Radien-X with Rotax 4-stroke engines.

RADIEN-X



RF DESS SPARE KEY
515177742

(from 2015)

RADIEN / RADIEN-X / REX²



ELECTRIC STARTER KIT
860201282

Start your sled with the simple push of a button. Battery cover with support (860201720) also required.

RADIEN



REWIND STARTER KIT
860201410

RADIEN



CTEK BRP 5.0 CHARGER
860200997

RADIEN / RADIEN-X / REX / REX² / XU



POWER OUTLET
860201423 • Wiring harness included.

RADIEN / RADIEN-X



USB POWER OUTLET KIT
860201261

Includes wiring harness.

RADIEN / RADIEN-X

POWER OUTLET
861507200 • Wiring harness not included.

REX / REX² / XU



ELECTRICAL

69 RANGER ALPINE ACCESSORIES



NEW
A-ARM WIDENING KIT
860202194

Provides more stability when turning on steep slopes. Adds 200 mm of width to the front suspension.
ALPINE



NEW
CARGO BOX
860202080

Large cargo box, 180 L for mounting on the rear rack. Specifically designed for 69 Ranger Alpine model.
ALPINE

NEW
BEACON BAR
860202079

Sturdy bar for lights (lights not included).
ALPINE



NEW
1+2 SEAT
860202081

2 up seat specifically designed for 69 Ranger Alpine model, allowing you to ride 3-up.
ALPINE

NEW
WARNING LIGHTS
860202302

Includes 2 LED lights to be installed at front and 2 at rear of the snowmobile.
ALPINE

NEW
HILL BRAKE
860202078

Advanced hill brake application for safe stopping on steep hills. Specifically designed for 69 Ranger Alpine model.
ALPINE

NEW
WORKING LIGHT KIT
860202084

Working light and warning lights for beacon bar (beacon bar not included).
ALPINE

SEE MORE PRODUCTS IN BRPPAC.COM



NEW
COVER
860202252

Provide protection for your snowmobile. Easy to install and stays on even in hard wind. Fits with one and two up seats.
RADIEN-X 600 MM

SLED COVER FOR 1+1 SEAT
860201997

Provide protection for your snowmobile. Easy to install and stays on even in hard wind.
RADIEN-X 500 MM

COVER, FOR 1+1 SEAT
860201869

RADIEN-X 400 MM

SLED COVER
860201868 • With medium and higher windshield.

RADIEN-X 400 MM

SLED COVER
860201996

Provide protection for your snowmobile. Easy to install and stays on even in hard wind.
RADIEN-X 500 MM

SLED COVER
860201535 • No windshield to medium.

RADIEN

SLED COVER FOR 1+1 SEAT
860201534

With medium and higher windshield.
RADIEN

SLED COVER
860201379

XU

WHITE ARMY COVER
21149

XU

COVERS

SEE MORE PRODUCTS IN BRPPAC.COM

50 TRAILING & COVERS



BRP STRAPS
295100389 Quick Lock
860200447 Ratchet Lock

Heavy-duty cargo straps. Adjustable length between 0.3 m and 1.5 m, hooks at both ends.



SCREW STYLE DECK HOOK
860200994

- Most common.
- Comes standard with front Superclamps.
- Screws into the existing hole where you would screw the old style bar and crank into or make your own holes



SUPER TRACTION GRID
860201593

- Super Traction Grids' strategic grid pattern provides incredible grip and accommodates all snowmobile tracks, even with paddles or studded.
- Each box contains 4 pieces (209 mm x 762 mm) and hardware.



SUPERCLAMP II
860200950

- Innovative trailer tie-down system.
- Silicone rubber pads to protect your skis.
- Front and middle handles allowing easy manoeuvrability.
- Pad lock compatible, becomes a theft deterrent.
- Tension adjustment knob - fits all snowmobiles.
- Comes with screw style deck hook



SUPERCLAMP REAR WITH SUPERTRAC
860201425

- Snowmobile tie-down system for rail.
- Silicone rubber pads to protect snowmobile suspension skid.
- Tension adjustment knob - fits all snowmobiles.
- 300 mm Supertrac kit included.
- Pad lock compatible, becomes a theft deterrent.



SUPERGLIDE EDGE RAIL TRIM
860201217

To secure Superglides on ramps or decks leaving an encapsulated finished edge



SUPERGLIDE II PRO
860201216

- No more ripping up the plywood on your trailer.
- Allows skis to glide with ease.
- Traction knobs incorporated for better traction.
- Exclusive venting, protects the deck of your trailer from moisture damage.
- Total length of 6 m.



SUPERGLIDE II WIDE
860201592

- Allows sled skis to glide with ease.
- Specifically designed traction knobs provide improved traction for your feet.
- Oval mounting channels and custom shoulder screws prevent warping by allowing for expansion and contraction that results from varying temperature.
- Exclusive venting: protect the deck of your trailer from moisture damage.
- Each box contains 8 pieces (343 mm x 749 mm).
- Comes with 72 specially coated screws with grommets.
- Total length of 6 m.



SUPERTRAC DECK HOOK
860201416

- For Supertrac.
- Adjustable and removable hook



SUPERTRAC KIT
860201413 • 12" (30 cm)
860201414 • 24" (61 cm)
860201415 • 48" (122 cm)

Includes: 1 piece Supertrac, 1 Supertrac deck hook, 2 end caps and all mounting hardware.



T-STYLE DECK HOOK
860200995

TRAILING & COVERS

THE MOST VERSATILE SNOWMOBILE TRAILER ON THE MARKET. ASK YOUR LOCAL DEALER FOR MORE INFORMATION.



COOLING

AIR RADIATOR KIT
860201860

Provides additional cooling in extreme conditions. For 600R and 850 E-TEC engines.

RADIEN / RADIEN-X 400 MM



ICE SCRATCHERS
860201728

Standard in BoonDocker DS models.

RADIEN / REX²



ICE SCRATCHERS
860201102

Wire shaped ice scratchers.

UNIVERSAL

UNIVERSAL

NEW

BRP TOOL KIT
860202029

Casing fits perfectly in Deep Snow Seat Box with or without battery (860202028). Features high quality tools. Includes:

- Stainless steel open end wrenches; 8-10mm, 10-13mm, 12-14mm, 15-17mm, 16-19mm.
- 1/4 drive ratchet with 4" extension, hex 8 - 10 - 13 -16, torx 25 - 30 - 40, allen 4 - 6 - 8, philips #2.
- Long nose vice grip.

RADIEN / RADIEN-X



TUNNEL GRIP PLATES
860200164



LOCKABLE FUEL CAP
619590085



RACING BRAKE PADS
619690016

LONG LIVE ADVENTURE

XPS Lubricants and Care products are expertly engineered to extend the life of your ride.

We pair the best engineers with the best chemists to create products that exceed tomorrow's technology with the knowledge from an insiders standpoint.

No Shortcuts

Tested on all engine platforms and all materials used in manufacturing today's powersports vehicles - not just one or two. We benchmarked against the best in every category to ensure XPS products meet or exceed each before offering them to you.

They perform and protect in the harshest conditions.

From desert heat to saltwater corrosion to the coldest temperatures on earth - XPS products have been proven to protect and perform.



To learn more about the complete line-up visit xpslubricants.com



NEW

XPS 2T SNOWMOBILE SYNTHETIC BLEND OIL

779649 • 3.785 L

Designed for all oil injection or pre-mix 2-stroke snowmobiles with electronic fuel injection or carbureted engines.



XPS 2T SNOWMOBILE PREMIUM MINERAL OIL

779277 • 3.785 L
779278 • 9.46 L
779279 • 18.92 L

Powersport formula with premium anti-wear and anti-corrosion additives.



XPS 4-STROKE EXTREME COLD GRADE SYNTHETIC OIL

779294 • 1 quart / 946 ml
779295 • 1 US gallon / 3.785 L

BRP's Rotax 4-stroke ACE and 1203 engines.



XPS 4-STROKE SYNTHETIC OIL

779286 • 1 quart / 946 ml
779287 • 1 US gallon / 3.785 L

The best choice for any BRP vehicle with a 4-stroke engine used in winter cold condition.



XPS 2-STROKE FULL SYNTHETIC OIL

779281 1 quart / 946 ml
779282 • 1 US gallon / 3.785 L
779283 • 2.5 US gallons / 9.46 L

Specifically engineered to meet the unique needs of Rotax.



XPS PRE-MIXED ANTIFREEZE/COOLANT

619590204
5 years (orange) - 1 quart / 946 ml

Ready-to-use pre-mix. Longlife, 5-year formula specially formulated for BRP vehicles.



XPS HIGH PERFORMANCE SUSPENSION FLUID

779219 • 1 quart / 946 ml

Engineered viscosity for optimized performance in cold weather conditions.



XPS SYNCHROMESH SYNTHETIC TRANSMISSION OIL

779211 • 24 oz. / 710 ml

Uses a unique combination of synthetic base stocks.



XPS SYNTHETIC CHAINCASE OIL

779185 • 12 oz. / 355 ml

Specifically developed for highperformance Lynx models, it represents the best in state-of-the-art chaincase lubrication



XPS BRAKE FLUID

779207 • 355 ml

Exceeds all DOT3 and DOT4 brake fluid requirements.



XPS STORAGE OIL

619590094 • 340 g

High-performance fogging oil designed to protect internal engine parts from rust and corrosion.



XPS ANTI-CORROSIVE LUBRICANT

619590093 • 12 oz. / 340 g

A multipurpose lubricant that can also be used to prevent rust, corrosion and moisture intrusion.



XPS CARBURATOR CLEANER

779184 • 12 oz. / 355 ml

Complete fuel treatment specially formulated to prevent small engine problems caused by Ethanol-blended fuels.



XPS FUEL STABILIZER

779183 • 8 oz. / 240 ml

Ethanol-compatible and will stabilize fuel in your tank to keep it from breaking down and causing hard starting, throttle hesitation and poor run quality.



XPS MICROFIBER TOWELS

219701759 • Pack of 2

Made from extremely fine fibers whose soft surfaces have been perfected for use in drying and polishing.



OIL FILTER

Use on all Lynx engines. See your dealer for details

OIL FILL SUPPORT RING

519000296



PARTS & PERFORMANCE



MAINTENANCE KIT FOR DRIVE PULLEY

REX, REX², XU
415129624 • 2011 (550F)
2011 to 2018 (600 & 600 E-TEC sea-level)

REX², XU
415129625 • 2012 (1200),
2012 to 2018 (600 E-TEC high altitude)

REX, REX², XU
415129626 • 2011 to 2018 (800R P-TEK & 800R E-TEC)
415129627 • 2008 to 2010 (800R P-TEK & 800R E-TEC)
415129708 • 2011 and prior (1200), 2011 and prior (600 E-TEC high altitude)

- Includes: 1 Spring Cover Ass'y, 3 Rollers Ass'y, 1 Bushing (Siding Flange),
- 6 Slider Shoes, 6 O-Rings, 1 Circlip, 3 Cotter Pins & 3 Lever Axles

NGK[†] SPARK PLUGS

414961100 • BR9-ES
415128524 • 600 CARB & 800 P-TEK - BR9-ECS (Gap 0.8 mm)
415129432 • 600 H.O. E-TEC - PZFR6F
415129429 • 1200 4-TEC - CR8EKB
415129484 • 800R E-TEC - PFR7AB
415129670 • 600 ACE - MR7B18
415129944 • 900 ACE - MR8B18
415130154 • 850 E-TEC & 600R E-TEC - ILKR8Q
512059552 • 550F, 600RS - BR9ECS (Gap 0.5 mm)
512060029 • 600 CARB, 800R P-TEK - BR8ECS (Gap 0,8 mm)

- You'll see a difference with genuine NGK spark plugs.
- Solid steel terminal reduces the chance of arcing in the plug cap, which may interfere the electric component.
- A necessity in today's ignition system

PISTON KIT

415129406 • 593 HO including SDI
415129405 • 793 HO
415129854 • 800 E-TEC 2011 and prior
415129855 • 800 E-TEC 2012 and up
415129858 • 800R P-TEK and 800R E-TEC 2010
415129541 • 593
415129542 • 552

- Kit includes: piston, rings, piston pin, needle bearing and circlips.

SEE MORE PRODUCTS IN BRPPAC.COM

DRIVE BELTS

LYNX 2021

RAVE RE 850 E-TEC	417300571	BOONDOCKER RE 3700/3900 850 E-TEC	417300571
RAVE RE 600R E-TEC	417300571	BOONDOCKER DS 3900/4100 850 E-TEC	417300571
RAVE ENDURO 600R E-TEC	417300571	COMMANDER 600R E-TEC / LTD 600R E-TEC	417300551
XTRIM 600 ACE	417300127	COMMANDER 900 ACE / LTD 900 ACE / GT 900 ACE	417300383
XTRIM LX 600 ACE	417300127	COMMANDER 900 ACE TURBO / LTD 900 ACE TURBO / GT 900 ACE TURBO	417300531
XTRIM SC 900 ACE	417300383	49 RANGER 600 ACE	417300127
XTERRAIN 3700 600 EFI	417300197	49 RANGER 600R E-TEC	417300551
XTERRAIN 3700/3900 600R E-TEC	417300551	49 RANGER PRO 900 ACE / ST 900 ACE	417300383
XTERRAIN PRO 3900 600R	417300551	59 RANGER 600 EFI	417300197
XTERRAIN RE 3700/3900 850 E-TEC / PRO 3900 850 E-TEC	417300571	59 RANGER 600 ACE	417300127
XTERRAIN RE 3700 900 ACE TURBO	417300531	69 RANGER 900 ACE/SNOWCRUISER	417300383
XTERRAIN BRUTAL 3000 850 E-TEC	417300571	69 RANGER ALPINE 900 ACE TURBO	417300531
BOONDOCKER 600R E-TEC	417300571		

TRACKS

Item	WxLxH "	WxLxH mm	Pitch	Profile	Std on MY21 vehicle
504153304	15x128x1,35	381x3251x34	2,86		
504153350	15x128x1,75	381x3251x44	2,86		
504153420	16x128x1,6	406x3251x41	2,86	Cobra	Rave Enduro
504153162	16x128x1,75	406x3251x44	2,86		
504152838	15x137x1,35	381x3489x34	2,86	Cobra	Xtrim LX
504154057	15x137x1,5	381x3487x38	2,86	Studded	Rave RE (spring model)
504153706	15x137x1,6	381x3487x41	2,86	Cobra	
504153967	15x137x1,6	381x3487x41	2,86	Cobra	Rave RE
504152803	16x137x1,75	406x3487x44	2,86		
504153293	16x137x2,2	406x3487x56	2,86	PowderMax Flex Edge	
504153103	16x137x2,25	406x3487x57	2,86		
504152987	16x146x1,5	406x3705x38	2,86		Xtrim Xtrim SC
504153670	16x146x2	406x3705x51	2,86	PowderMax	Xterrain 3700 Xterrain RE 3700
504153198	16x146x2,5	406x3705x64	2,86	PowderMax Flex Edge	BoonDocker RE 3700
504153008	16x146x2,5	406x3705x51	2,86	PowderMax	Xterrain RE 3700 (spring model)
504153349	16x153x3	406x3886x76	3	PowderMax III	
504152962	16x154x1,5	406x3912x39	2,86		49 Ranger
504153173	16x154x2	406x3912x51	2,86	PowderMax	Xterrain 3900 Xterrain RE 3900
504153009	16x154x2,5	406x3912x64	2,86	PowderMax	Xterrain RE 3900 (spring model)
504153199	16x154x2,5	406x3912x64	2,86		
504153791	16x154x2,5	400x3912x64	3,5	PowderMax Light	BoonDocker 600R BoonDocker RE 3900 BoonDocker DS 3900 (spring model) Xterrain PRO
504153785	16x154x3	400x3912x76	3,5	PowderMax Light	BoonDocker DS 3900
504153276	16x163x1,5	406x4141x39	2,86		49 Ranger ST
504153401	16x163x2,3	406x4141x59	2,86	PowderMax	
504153016	16x163x2,3	406x4141x59	2,86		49 Ranger PRO 49 Ranger ST (spring model)
504153792	16x163x2,5	406x4120x64	3,5	PowderMax Light	
504153786	16x165x3	406x4120x76	3,5	PowderMax Light	BoonDocker DS 4100
504152817	20x154x1,25	500x3912x32	2,86		
504153036	20x154x1,25	500x3912x32	2,86	Studded	
605613004	20x154x1,5	500x3912x38	2,86		
504153973	20x154x1,5	500x3912x38	2,86	Cobra	59 Ranger 600 EFI
504153974	20x154x1,5	500x3912x38	2,86	Studded	Commander GT Commander (spring model)
504153133	20x154x1,75	500x3912x44	2,86		Commander Commander Limited 59 Ranger 600 ACE
504153313	20x154x2,35	500x3912x60	2,86		Xterrain Brutal
504153928	24x156x1,25	600x3968x32	2,52		69 Ranger 69 Ranger SnowCruiser 69 Ranger Alpine
504153927	24x156x1,25	600x3968x32	2,52	Studded	
504153248	24x156x1,75	600x3968x44	2,52	Cobra	

EXPLORE AN ENTIRE WORLD OF ADVENTURE WITH ALL OF OUR BRP PRODUCTS. BRP.COM



323212140 Lynx PAC Brochure 2021 English



ski-doo LYNX SEA-DOO CAN-AM ROTAX ALUMACRAFT Manitou Evinrude



LYNX 2021	DEEP SNOW SPORT						CROSSOVER						CROSSOVER						SPORT		UTILITY																				
	BoonDocker						Xterrain						Xtrim			Commander			Rave		49 Ranger			59 Ranger	69 Ranger																
MODEL	3900	DS 3900	DS 4100	RE 3700	RE 3900	RE 3900 (short tunnel)	3700	3900	PRO 3900	RE 3700	RE 3900	RE 3700 Turbo	Brutal 3900	LX	SC	Limited		Grand Tourer	RE	Enduro	PRO	ST	Alpine	Snow Cruiser																	
COLOUR	Dazzling Blue/Cyan/Black		Dazzling Blue/Cyan/Black		Dazzling Blue/Cyan		Orange		Orange		Orange		Manta Green/Black	Manta Green/Black	Manta Green/Black	Manta Green	Manta Green	Manta Green	Manta Green	Manta Green	Manta Green	Manta Green	Manta Green	Manta Green	Manta Green	Manta Green	Viper Red/Black	Viper Red/Black	Viper Red/Black	Race Orange/Grey	Race Orange/Grey	Viper Red/Grey	Viper Red/Black/White	Viper Red/Black/White	Full Moon Silver/Orange/Black	Full Moon Silver/Orange/Black	Full Moon Silver/Orange/Black	Viper Red/Black	White/Orange/Black	White/Orange/Black	Viper Red/Grey/Black
ENGINE	600R E-TEC		850 E-TEC				600 EFI 600R E-TEC	600R E-TEC	600R E-TEC 850 E-TEC	850 E-TEC		900 ACE Turbo	850 E-TEC	600 ACE	900 ACE	600R E-TEC 900 ACE 900 ACE Turbo		900 ACE Turbo	600R E-TEC 850 E-TEC	600R E-TEC	600 ACE	600R E-TEC 900 ACE	900 ACE	600 EFI 600 ACE	900 ACE Turbo	900 ACE															
FEATURES																																									
Frame	Radien						Radien			Radien-X			Radien-X			Radien-X			Radien		Radien-X			Radien-X	Radien-X																
Skis	Blade DS+						Blade DS+						Blade DS+			Blade DS+			Blade XC		Blade DS+			Blade DS+	Blade DS+																
Seating	BoonDocker, 1-up		BoonDocker DS, 1-up		BoonDocker, 1-up		Sport, 1-up				Brutal, 1-up		Sport, 1-up	2-up	Sport, 1-up	Modular, 1-up	Modular, 1+1	Luxury Modular 1+1 with heating	Sport, 1-up		2-up light		2-up	Modular, 1-up	Modular, 1-up heated	Luxury Modular 1+1 with heating															
Handlebar	U-type aluminium with hooks, low grab handle						U-type aluminium with hooks, low grab handle						Straight steel with hooks	Steel with hooks	Straight steel with hooks	U-type steel with hooks, low grab handle		Steel with hooks	U-type aluminium with hooks		U-type steel with hooks, low grab handle			U-type steel with hooks, low grab handle (grab handle only in 600 ACE)	U-type steel with hooks, low grab handle																
Riser block height	140 mm						140 mm		120 mm				120 mm			140 mm		Adjustable 125-165 mm	90 mm		140 mm			140 mm	140 mm	Adjustable 125-165 mm															
Starter	Manual Electric	Manual SHOT	Manual with SHOT	Manual SHOT	Manual SHOT	Manual with SHOT	Electric and manual				Electric	Electric and manual	Electric			Electric	Electric (900 ACE & 900 ACE Turbo) Electric and manual (600R E-TEC)	Electric	Manual Electric	Manual	Electric	Electric (900 ACE) Electric and manual (600R E-TEC)	Electric	Electric (600 ACE) Electric and manual (600 EFI)	Electric																
Reverse	RER						RER				Electro-mechanical	RER	Mechanical			RER (600R E-TEC) Electromechanical (ACE)		Electro-mechanical	RER		Mechanical	RER (600R E-TEC) Mechanical (900 ACE)	Mechanical	RER (600 EFI) Electromechanical (ACE)	Electromechanical																
Gauge	4.5-in. digital display						4.5-in. digital display		7.2-in. wide digital display				4.5-in. digital display		7.2-in. wide digital display	4.5-in. digital display	7.2-in. wide digital display		7.2-in. wide digital display		4.5-in. digital display		7.2-in. wide digital display	4.5-in. digital display	4.5-in. digital display	7.2-in. wide digital display															
Mirrors																Standard					Standard				Standard																
Windshield							Low	Medium with side deflectors	Low				Medium with side deflectors	Extra high with side deflectors	Medium with side deflectors	Extra high with side deflectors			Extra low		Extra high with side deflectors			Extra high with side deflectors	Extra high with side deflectors																
Hitch																Standard					Standard			Standard (only in 600 ACE)	Standard																
Visor Plug front / rear							Front						Front			Front		Front/Rear	Front		Front			Front (only on 600 ACE)	Front		Front/Rear														
12V power outlet	Yes, in front compartment						Yes, in front compartment						Yes, in front compartment			Front			Yes, in front compartment		Yes, in front compartment			Front (only on 600 ACE)	Yes, in front compartment	Front															
Air radiator with fan							Yes						Yes			Yes					Yes			Yes (600 ACE)	Yes																
SUSPENSION																																									
Front suspension	LFS						LFS						LFS			LFS with bended lower A-Arms		LFS	LFS		LFS with bended lower A-Arms			LFS	LFS	LFS with bended lower A-Arms	LFS														
Front shock	HPG 36	KYB 36 Kashima		KYB 36 CR Kashima			HPG 36		KYB 40 HLCR Kashima		KYB 36		HPG 36		KYB 36	HPG 36		KYB 36 R	KYB 40 HLCR Kashima		HPG 36			MC		HPG 36		KYB 36 R													
Rear suspension	PPS ² -DS+ -3900		PPS ² -DS+ -4100	PPS ² -3700	PPS ² -3900		PPS ² -DS+ -3700	PPS ² -DS+ -3900	PPS ² -3700	PPS ² -3900	PPS ² -3700	EasyRide	PPS ² -3700	PPS ² -3500	PPS ² -3700	EasyRide with adjustment			PPS ² -3500	PPS ² -3300	EasyRide		EasyRide with adjustment	EasyRide (600 EFI) EasyRide with adjustment (600 ACE)	EasyRide Alpine	EasyRide with adjustment															
Center shock	HPG 36	KYB 36 Kashima		KYB 46 HLCR Kashima			HPG 36		KYB 46 HLCR Kashima		KYB 46 Kashima		HPG 36	KYB 36	HPG 36		KYB 46 Kashima	KYB 46 HLCR Kashima		HPG 36			HPG 36		HPG 36		KYB 46 Kashima														
Rear shock	HPG 36	KYB 36 Kashima		KYB 46 HLCR Kashima			HPG 36		KYB 46 HLCR Kashima		KYB 46 Kashima		HPG 36	KYB 46	HPG 36		KYB 46 Kashima	KYB 46 HLCR Kashima		HPG 36			HPG 36		2 x HPG 36	HPG 36	KYB 46 Kashima														
MEASUREMENTS																																									
Ski stance	921 mm		996 mm		921 mm		996 mm	921 mm	996 mm		1080 mm	996 mm	996 mm	1080 mm	996 mm	1080 mm		1080 mm		996 mm		921 mm (600R E-TEC) 996 mm (900 ACE)	996 mm	996 mm	1080 mm	996 mm	1080 mm	996 mm	1080 mm												
Track nominal width	400 mm		406 mm	400 mm			400 mm		406 mm		500 mm		406 mm	381 mm	406 mm	500 mm			381 mm		406 mm			500 mm		600 mm															
Track nominal length	3912 mm		4178 mm	3705 mm	3912 mm		3705 mm	3923 mm	3912 mm	3705 mm	3923 mm	3705 mm	3923 mm	3705 mm	3487 mm	3705 mm	3923 mm			3487 mm	3269 mm	3923 mm	4141 mm		3923 mm	3968 mm															
Track profile height	64 mm PowderMax Light FlexEdge	76 mm PowderMax Light FlexEdge 64 mm PowderMax Light FlexEdge	76 mm PowderMax Light FlexEdge	64 mm PowderMax FlexEdge	64 mm PowderMax Light FlexEdge		51 mm PowderMax	64 mm PowderMax Light FlexEdge	51 mm PowderMax 64 mm PowderMax Light FlexEdge	51 mm PowderMax	60 mm	39 mm DSG	34 mm Cobra	39 mm DSG	44 mm 38 mm Cobra studded	44 mm	38 mm Cobra (studded)	41 mm Cobra 38 mm Ice Cobra studded	41 mm Cobra	39 mm DSG Flex	59 mm PowderMax FlexEdge	39 mm DSG Flex	38 mm (600 EFI) 44 mm (600 ACE)	32 mm Ice Ripper (studded)	32 mm																
Fuel tank	37 liters						37 liters						42 liters			37 liters			42 liters		37 liters			42 liters		42 liters															
Oil tank capacity (2-stroke)	3,4 liters						3,4 liters						-	3,4 liters	3,4 liters			-	3,4 liters		-	3,4 liters			-	-	-														